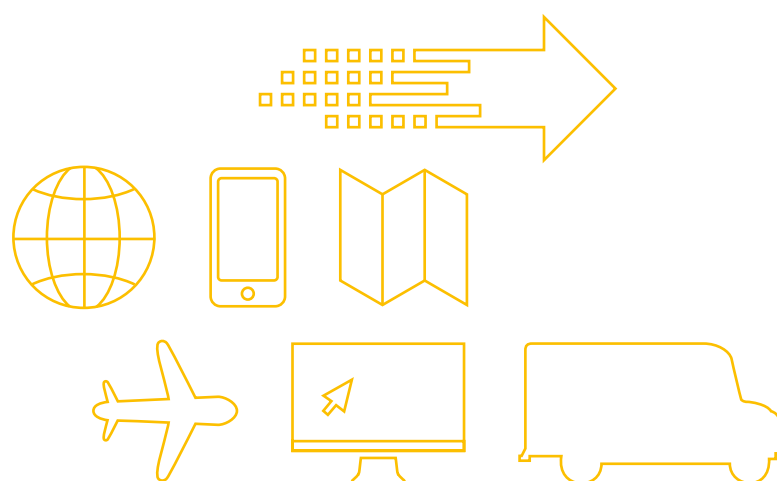




ups.com®  
Nationwide Toll Free:  
1800-22-7171/1800-102-7171



## UPS GETS THE JOB DONE.

---

As a global leader in logistics, UPS guaranteed on-time package and freight shipments are just a few of the many deliveries that we make every business day. We also deliver:

- Extensive knowledge and experience from the world's largest package delivery company to keep you competitive in a rapidly expanding international marketplace.
- Customised solutions and reliable services for shipping, tracking and billing from a global leader in technology to drive greater efficiency, helping to save you time and reduce costs.
- Sustainable shipping options from one of the most efficient global transportation networks in the world to help reduce carbon emissions and conserve resources.

All of this helps make the best delivery of all possible — your satisfaction and, most importantly, your customers' satisfaction. When that's delivered, we know we've done our job.

To learn more about what we can deliver for your business, visit [ups.com/solutions/in](https://www.ups.com/solutions/in).

# UPS International Shipping Services

## PACKAGE

Service	Delivered By	Destinations	Other Information
<b>1-3 DAYS</b>			
<b>UPS Worldwide Express Plus®</b>	<ul style="list-style-type: none"> <li>Guaranteed early morning delivery by:</li> <li>• 8:00 am/ 8:30 am to major cities in the U.S.</li> <li>• 8:30 am to Canada</li> <li>• 9:00 am to major Asian cities, over 4,000 U.S. cities, and major business centres in Europe</li> <li>• 9:00 am from worldwide to selected destinations in your country</li> </ul>	To major cities in the U.S., Europe and Asia	<ul style="list-style-type: none"> <li>• Ideal for urgent shipments</li> <li>• Priority handling</li> <li>• UPS 10 KG Box® and UPS 25 KG Box® are available for this service</li> </ul>
<b>UPS Worldwide Express®</b>	<ul style="list-style-type: none"> <li>Guaranteed time-definite delivery by:</li> <li>• 10:30 am or before 12:00 noon to most parts of the U.S.; major cities in Canada, Europe and Asia; and selected areas in the Americas</li> <li>• 12:00 noon from worldwide to selected destinations in your country</li> </ul>	To the U.S.; major cities in Canada, Europe and Asia; and selected areas in the Americas	<ul style="list-style-type: none"> <li>• UPS 10 KG Box and UPS 25 KG Box are available for this service</li> </ul>
<b>UPS Worldwide Express Freight™</b>	<ul style="list-style-type: none"> <li>• Guaranteed delivery by end-of-day, within 1-3 business days, depending on destinations</li> </ul>	To more than 50 countries and territories worldwide	<ul style="list-style-type: none"> <li>• Door-to-door and Non door-to-door options are available</li> <li>• For palletised shipments of more than 70 kg</li> </ul>
<b>UPS Worldwide Express Saver™</b>	<ul style="list-style-type: none"> <li>• Guaranteed delivery by end-of-day, to over 220 countries and territories worldwide</li> </ul>	To over 220 countries and territories worldwide	<ul style="list-style-type: none"> <li>• An economical alternative to UPS Express for speedy and reliable service</li> <li>• UPS 10 KG Box and UPS 25 KG Box are available for this service</li> </ul>
<b>3-5 DAYS</b>			
<b>UPS Worldwide Expedited®</b>	<ul style="list-style-type: none"> <li>• Delivery in as little as 3 business days within Asia, and from Asia to major business centres in Europe, and North and South America</li> </ul>	Within Asia, and from Asia to major business centres in Europe, and North and South America	<ul style="list-style-type: none"> <li>• An economical option for less time-critical shipments</li> <li>• Day-definite, time-in-transit lets you plan delivery schedule</li> </ul>

## AIR FREIGHT

Service	Delivered By	Destinations	Other Information
<b>1-3 DAYS</b>			
<b>UPS Air Freight Direct®</b>	<ul style="list-style-type: none"> <li>• Day-specific scheduling, airport-to-airport service, with delivery within 1-3 days</li> </ul>	Covers nearly every location worldwide	<ul style="list-style-type: none"> <li>• Ideal for shipments over 70 kg</li> <li>• Convenient and easy shipment processing for palletised and non-palletised freight</li> <li>• Optional services include collection, delivery and customs clearance</li> </ul>
<b>3-5 DAYS</b>			
<b>UPS Air Freight Consolidated®</b>	<ul style="list-style-type: none"> <li>• Day-specific scheduling, airport-to-airport service, with delivery within 3-5 days</li> </ul>	Worldwide	<ul style="list-style-type: none"> <li>• Ideal for shipments over 70 kg</li> <li>• Convenient and easy shipment processing for palletised and non-palletised freight</li> <li>• Optional services include collection, delivery, and customs clearance</li> </ul>

\* **Note:** Conditions and restrictions, including the UPS Terms and Conditions of Service, apply. For details, please contact our Customer Service Representatives or refer to ups.com®.



# Determine the Weight and Size

## UPS Express Services

### Billable Weight:

#### Actual or Dimensional?

Determining which weight to use in calculating your rate requires that you determine which rule applies. Different rules apply depending on the service selected.

Actual weight is the weight of the package rounded up to the next half kilogram.

Dimensional weight considers density, which is the amount of space a package occupies in relation to its actual weight.

Billable weight is the weight used to calculate the rate. The billable weight will be the greater of the package's actual or dimensional weight.

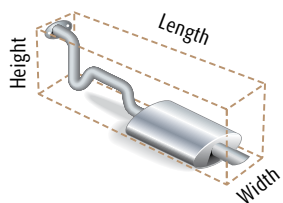
#### Note:

Packages that exceed UPS weight and size limit are not accepted for transportation. Contact our Customer Service Representatives for details.

#### Irregularly-shaped Packages

Measure boxes or containers that are not rectangular to determine dimensional weight and whether the package is within maximum limits.

Treat the irregularly-shaped package as if it is in a regular rectangular box. Measure the length, width and height of the package from its extreme points.



### Step 1

#### Determine the Actual Weight:

Use a scale to determine the weight of the package. Increase fractions of a weight to the next half kilogram.

### Step 2

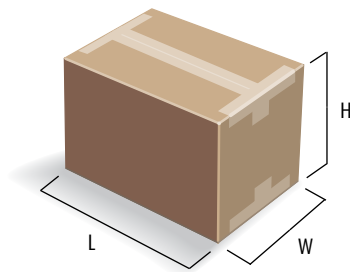
#### Determine the Dimensional Weight\*:

Calculate the cubic size by multiplying the length by the width and by the height (each rounded off to the nearest whole centimetre) of each package.

Divide the cubic size of the package by 5,000 to determine the dimensional weight in kilograms. Increase fractions of a weight to the next half kilogram.

$$\left[ \begin{array}{l} \text{Dimensional Weight} \\ \text{in Kilograms} \end{array} \right] = \frac{L \times W \times H}{5,000}$$

L = Length in centimetres  
W = Width in centimetres  
H = Height in centimetres



### Step 3

#### Select the Proper Zone:

Locate the appropriate zone for the shipment in the zone chart on pages 9 to 12.

### Step 4

#### Determine the Shipment Weight:

Rates for multiple-piece shipments\*\*, which include UPS Express Paks and packages shipped to a single receiver on the same day, are based on the total shipment weight of an individual shipment. This means substantial savings over single-piece rates. To determine a shipment's total billable weight, use the greater of each package's actual or dimensional weight.

#### Additional Information: Weight and Size Limits

- Maximum weight per package is 70 kg.
- Maximum length per package is 270 cm.
- Maximum size per package is 419 cm in length and girth [(2 x width) + (2 x height)] combined.
- There is no limit to the total shipment weight or number of packages in a shipment.

\* For import shipments, use the origin country unit of measure and dimensional factor to calculate the dimensional weight.

Dimensional weight applies to all international shipments except shipments using UPS Express Envelope, UPS 10 KG Box® and UPS 25 KG Box®

\*\* Multiple-piece shipment refers to a shipment consisting of packages and/or documents sent via a single waybill number.

#### Note:

Future Changes – Rates, charges, service explanation, and services are subject to change without prior notice.



# Determine the Weight and Size

## UPS Worldwide Express Freight™

### Billable Weight:

#### Actual or Dimensional?

Determining which weight to use in calculating your rate requires that you determine which rule applies.

Actual weight is the weight of the items on the pallet and the weight of the pallet rounded up to the next half kilogram.

Dimensional weight considers pallet density, which is the amount of space a pallet occupies in relation to its actual weight.

Billable weight is the weight used to calculate the rate. The billable weight will be the greater of the pallet's actual or dimensional weight. A minimal rate may apply.

### Step 1

#### Determine the Actual Weight:

Actual weight is the weight of the items on the pallet and the weight of the pallet rounded up to the next half kilogram.

### Step 2

#### Determine the Dimensional Weight\*:

Calculate the cubic size by multiplying the length by the width and by the height (each rounded off to the nearest whole centimetre) of each pallet.

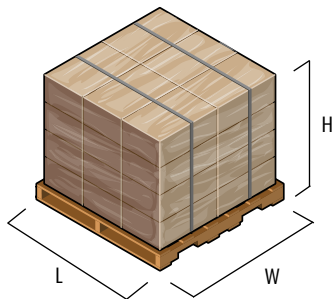
Divide the cubic size of the pallet by 5,000 to determine the dimensional weight in kilograms. Increase fractions of a weight to the next half kilogram.

$$\left[ \begin{array}{l} \text{Dimensional Weight} \\ \text{in Kilograms} \end{array} \right] = \frac{L \times W \times H}{5,000}$$

L = Length in centimetres

W = Width in centimetres

H = Height in centimetres



### Step 3

#### Determine the Billable Weight:

Compare the pallet's actual weight to the dimensional weight. The greater of the two is the billable weight and should be used to calculate the rate.

For multiple-pallet shipments, add up each pallet's billable weight to determine the shipment's billable weight.

#### Billable Weight Calculation

e.g.: A customer has a shipment of three pallets weighing 50 kg, 400 kg and 300 kg. All pallets are the same size with the following dimensions: 122 cm x 102 cm x 150 cm

#### 1. Determine the Actual Weight

Actual Weight:  
50 kg + 400 kg + 300 kg  
= 750 kg

#### 2. Determine Dimensional Weight

Pallet Dimensional Weight:  
(122 cm x 102 cm x 150 cm) / 5000  
= 373.5 kg

Shipment Dimensional Weight:  
373.5 kg + 373.5 kg + 373.5 kg  
= 1,120.5 kg

#### 3. Determine Billable Weight

Shipment's Billable Weight:  
373.5 kg + 400 kg + 373.5 kg  
= 1,147 kg

\* For import shipments, use the origin country unit of measure and dimensional factor to calculate the dimensional weight.

#### Note:

Future Changes – Rates, charges, service explanation, and services are subject to change without prior notice.



# Services with Additional Charges

## Contractual

### UPS FTZ Facilitator®

With UPS FTZ Facilitator, importers and exporters have the ability to use UPS to transport international shipments "in-bond" to and from a global Free/Foreign Trade Zone (FTZ). This service is available for shipments using UPS Worldwide Express Plus®, UPS Worldwide Express®, UPS Worldwide Express Freight™, UPS Worldwide Express Saver™ and UPS Worldwide Expedited®.

This contractual, fee-based service allows the shipment of goods to move to or from an FTZ without using other transportation providers. Using UPS as a single source enables importers and exporters to increase visibility and tracking, and reduce the chance for errors and costs associated with utilising multiple transportation providers.

Importers will choose UPS FTZ Facilitator to direct shipments to be delivered, in-bond, to a designated FTZ rather than being cleared through customs. The fee for this service is INR 3,500 per shipment.

Exporters will choose UPS FTZ Facilitator to ship goods in-bond from an FTZ to an international destination. The fee for this service is INR 3,500 per shipment.

### UPS Broker of Choice®

With UPS Broker of Choice, importers select their own customs broker for customs clearance of their UPS international shipments. This service is available for shipments using UPS Worldwide Express Plus, UPS Worldwide Express, UPS Worldwide Express Saver, UPS Worldwide Expedited and UPS Worldwide Express Freight.

This contractual, fee-based service ensures that the established relationship with a Customs Broker remains in place while the importer works with UPS to save time and increase efficiencies in shipping and customs processes. Using UPS Broker of Choice enables importers to reduce fees and errors incurred while using multiple customs clearance processes.

Importers have two options:

1. UPS Broker of Choice Onsite is for shipments that remain in UPS possession while the importer's customs broker completes customs clearance procedures prior to UPS completing delivery of the shipment. The fee for this is INR 2,200 per shipment.
2. UPS Broker of Choice Offsite is for shipments moved "in-bond" directly to a customs-controlled (bonded) warehouse (at the importer's direction) where the importer's customs broker completes the customs clearance procedures. The UPS transport is complete upon delivery of the shipment to the warehouse. The fee for this option is INR 5,700 per shipment.

### International Dangerous Goods

Dangerous goods are articles or substances which are capable of posing a significant risk to health, safety or property if not handled and shipped in a proper manner.

There are various laws, regulations and rules governing the transportation of dangerous goods across international borders.

UPS offers a contractual service which ensures that your dangerous goods shipments are handled and shipped in accordance with international and domestic regulations via our global network. A surcharge of INR 2,632 per shipment or INR 239 per package applies, whichever is greater.

For a detailed listing of UPS acceptable classes and commodities of dangerous goods, please contact our Customer Service Representatives.

---

**Note:** Conditions and restrictions, including the UPS Terms and Conditions of Service, apply. For details, please contact our Customer Service Representatives or refer to [ups.com](https://www.ups.com)®.

Future Changes – Rates, charges, service explanation, and services are subject to change without prior notice.



# Services with Additional Charges

## Non-Contractual

### UPS Returns®\*

To meet a range of reverse logistics needs and simplify the process of collecting customer returns, UPS offers a variety of returns services. You generate a return label for your customer, or UPS provides your customer with a label via e-mail or mail. The UPS Returns services available are:

#### *Print Return Label*

You generate the label and include it in an outbound shipment or distribute separately to your customer, who then applies the label to the package.  
Fee: INR 50

#### *Electronic Return Label*

UPS e-mails the label upon your request to your customer, who then prints the label and applies it to the package.  
Fee: INR 71

#### *Print and Mail Return Label*

UPS prints the label upon your request and mails it to your customer, who applies the label to the package.  
Fee: INR 124

### UPS Returns® Plus\*\*

UPS brings the return label to your customer's pickup location when we pick up the return package.

#### *1 UPS Pickup Attempt*

If the package cannot be picked up on the first attempt, we will leave the return label at the pickup location.  
Fee: INR 196

#### *3 UPS Pickup Attempts*

If the package cannot be picked up on the first attempt, we will attempt to pick up the package on each of the next two business days. If the package cannot be picked up after the third attempt, the return label will be returned.  
Fee: INR 280

### Undeliverable Package Return Charge

Shipments refused by the consignee, or which for any other reason cannot be delivered, will be held, and UPS will attempt to contact the shipper for further instructions, including return. Applicable transportation costs plus a INR 467 surcharge per undeliverable shipment apply to any return, at the shipper's expense.

### Declared Value Charge

For each shipment over INR 4,180, you may purchase additional coverage against loss or damage at INR 17 for each additional INR 4,180 or fraction thereof. Charges for declared value can be billed to the shipper, the receiver, or to a third party.

### Saturday Delivery

Delivery of shipments is available at an additional charge of INR 462 for each UPS Express Envelope or each shipment of UPS Express Paks and packages. This charge will be billed to the party who bears the shipping charges.

UPS Worldwide Express Freight™ provides Saturday Delivery to select destinations in the U.S. and Canada for an additional charge of INR 11,592 per shipment

### Direct Delivery Only

Direct Delivery Only shipments are only delivered to the address on the shipping label and may not be rerouted, redirected or delivered to an alternate address. The shipments are eligible for Hold for Pickup at UPS Customer Center, Reschedule Delivery and Return to Sender. This service is available for residential and commercial shipments. A fee of INR 95 applies to each package in the shipment.

\* Only available for customers using a UPS compliant shipping system that produces a smart label.

+ Not available for pickup in Asia.

**Note:**  
Conditions and restrictions, including the UPS Terms and Conditions of Service, apply. For details, please contact our Customer Service Representatives or refer to ups.com®.

Future Changes – Rates, charges, service explanation, and services are subject to change without prior notice.



# Other Additional Charges

## Address Correction

An additional charge of INR 490 per package or a maximum of INR 1,715 per shipment may be billed to the shipper for unsuccessful delivery because of an incorrect address, or if addressed to a P.O. Box.

## Residential Surcharge

UPS provides delivery service to residential addresses as well as business addresses in the United States and Canada. A residential delivery is one made to a home, including a business operating out of a home. For each residential delivery in the United States and Canada, an additional charge of INR 144 per shipment applies. UPS Worldwide Express Freight™ will be charged at INR 6,502 per shipment.

## Extended Area Surcharge

UPS provides a collection delivery service in extended areas as well as urban areas. An additional charge of INR 1,500 per shipment or INR 19 per kg applies, whichever is greater, for shipments collected or delivered in an extended areas. For a copy of the Extended Area Surcharge points, please download from [ups.com/in](http://ups.com/in).

## Remote Area Surcharge

A charge of INR 1,629 per shipment or INR 22 per kg applies, whichever is greater, for delivery to or collection from an area beyond UPS extended areas which are less accessible for pickups and deliveries. For a copy of the Remote Area Surcharge points, please download from [ups.com/in](http://ups.com/in).

## Currency Conversion

Charges to a payer's account in a foreign currency will be converted to the payer's currency using a weekly exchange rate secured through Major Money Centre Banks, plus an exchange fee equal to 0.75% of the amount converted.

## Duty/Tax Forwarding Surcharge

When the "Duty/Tax Forwarding Surcharge" billing option is selected, a INR 730 surcharge will be billed to the shipper.

## Bill Receiver/Freight Collect Refusal Fee

An account number is invalid if it is not the correct account number for the bill-to party, or if it is the account number for a consignee or third party who fails to pay the shipping charges. A fee of INR 490 per shipment will be charged for international shipments with an invalid account number.

## Look-up Surcharge

For every international shipment with a missing or invalid account number, for the bill-to party, UPS will perform a "look-up" by tracing the correct account number or creating a temporary account to bill the consignee or third party. A fee of INR 250 per shipment will be billed to the shipper for every "look-up" service performed.

## Customs Brokerage Charges

UPS provides customs brokerage service at no additional charge for routine customs clearance (including formal entries for shipments of up to five tariff lines). Additional charges may apply for complex customs clearance procedures and consolidated clearance requirements. For more information, contact our Customer Service Representatives.

## Disbursement Fee

In order to expedite customs clearance, UPS may advance duty and taxes on a customer's behalf. A Disbursement Fee based on the amount advanced will be assessed and billed. The Disbursement Fee for importation into India will be 2.5% of the import duties and taxes, subject to a minimum of INR 250 per shipment, whichever is greater.

### Note:

Conditions and restrictions, including the UPS Terms and Conditions of Service, apply. For details, please contact our Customer Service Representatives or refer to [ups.com](http://ups.com)®.

Future Changes – Rates, charges, service explanation, and services are subject to change without prior notice.

For additional information and services, call our Customer Service Representatives at 1800-22-7171/1800-102-7171.



# Other Additional Charges

(Continued)

## Local Taxes and Duties

All rates exclude any taxes, duties and surcharges that may be imposed pursuant to local regulations.

## Delivery Confirmation Signature Required and Delivery Confirmation Adult Signature Required

UPS Delivery Confirmation\* services are available prior to the release of your shipment.

Both services will require the UPS service provider to request for a consignee's signature before the delivery of the shipment. However, with the Delivery Confirmation Adult Signature Required service, only an adult (at least 18 years old\*\*) consignee signature will secure the release of the shipment.

A surcharge of INR 100 and INR 180 per shipment will be imposed for Delivery Confirmation Signature Required service and Delivery Confirmation Adult Signature Required service respectively.

## Additional Handling Charge\*

An additional handling charge of INR 242 per package will apply to the following:

- Any article that is encased in an outside shipping container made of metal or wood
- Any cylindrical item, such as a barrel, drum, pail, or tyre, that is not fully encased in a corrugated cardboard shipping container
- Any package with the longest side exceeding 152 cm or its second-longest side exceeding 76 cm
- Any package with an actual weight greater than 32 kg
- Each package in a shipment where the average weight per package is greater than 32 kg and the weight for each package is not specified on the source document or the UPS automated shipping system used

## Oversize Pallet Handling Surcharge

An Oversize Pallet Handling Surcharge of INR 2,956 per pallet will also apply to UPS Worldwide Express Freight™ when a pallet's dimensions exceed the maximum size or weight restrictions (which vary by origin and destination) as set forth at [ups.com/palletmaximums](https://www.ups.com/palletmaximums).

## Large Package Surcharge - Minimum Billable Weight (MBW)

A package is considered a "Large Package" when its length plus girth [(2 x width) + (2 x height)] combined exceeds 330 cm, but does not exceed the maximum UPS size of 419 cm.

Large Packages are subject to a minimum billable weight of 40 kg, at a surcharge of INR 2,005 per package.

An Additional Handling Charge will not be assessed when a Large Package Surcharge is applied.

## Over Maximum Limits Fee

UPS small package services do not accept shipments exceeding the following weight and dimensions. If in UPS's discretion, UPS does accept shipments exceeding these maximum limits, an Over Maximum Limits Fee of INR 2,005 per package will apply to the following:

- Maximum weight per package of 70 kg
- Maximum length per package of 270 cm
- Maximum size per package of 419 cm in length and girth [(2 x width) + (2 x height)] combined

For shipments exceeding the above dimensions, please refer to UPS Worldwide Express Freight service on page 1 of this guide for more details.

\* Only available for customers using a UPS compliant shipping system that produces a smart label.

\*\* UPS is not liable for inaccurate age assessment as this is solely determined at the discretion of the UPS service provider.

+ UPS also reserves the right to assess the Additional Handling Charge for any package that, in UPS's sole discretion, requires special handling.

**Note:** Conditions and restrictions, including the UPS Terms and Conditions of Service, apply. For details, please contact our Customer Service Representatives or refer to [ups.com](https://www.ups.com)®.

Future Changes – Rates, charges, service explanation, and services are subject to change without prior notice.

For additional information and services, call our Customer Service Representatives at 1800-22-7171/1800-102-7171.



# Other Additional Charges

(Continued)

## UPS Import Control<sup>®\*</sup>

Provide your exporter with shipping labels and commercial invoice to be attached to an import shipment. Labels and commercial invoice can be sent with a UPS driver for collection, by e-mail, mail or printed for distribution at your discretion. This service allows the importer to control creation of shipment labels, commercial invoice and billing. The UPS Import Services available are:

### Print Label

You generate the label and include it in an outbound shipment or distribute separately to your customer, who then applies the label to the package.  
Fee: INR 50

### Electronic Label

UPS e-mails the label upon your request to your customer, who then prints the label and applies it to the package.  
Fee: INR 71

### Print and Mail Label

UPS prints the label upon your request and mails it to your customer, who applies the label to the package.  
Fee: INR 124

### 1 UPS Pickup Attempt Label<sup>\*\*</sup>

If the package cannot be picked up on the first attempt, we will leave the printed label at the pickup location.  
Fee: INR 196

### 3 UPS Pickup Attempts Label<sup>\*\*</sup>

If the package cannot be picked up on the first attempt, we will attempt to pick up the package on each of the next two business days. If the package cannot be picked up after the third attempt, the label will be returned.  
Fee: INR 280

### Commercial Invoice Removal<sup>\*\*</sup>

Provides an importer with the option to have the commercial invoice removed from an Import Control shipment prior to delivery. The service provides importers with the flexibility of routing shipments directly to their buyer while keeping the value of goods confidential.  
Fee: INR 964 per shipment

### UPS Carbon Neutral<sup>\*</sup>

Offset the climate impact of your shipping with UPS carbon neutral. When you select UPS carbon neutral during shipment preparation UPS will purchase offsets to mitigate the carbon (CO<sub>2</sub>) emissions associated with the transport of your shipment.  
Fee: INR 35 per package

UPS Worldwide Express Freight<sup>™</sup> services will be charged at INR 1,182 per pallet.

### Delivery Reattempt

One delivery attempt is included in the rate. Additional delivery attempts will be charged at INR 2,837 for each shipment of UPS Worldwide Express Freight services.

### Fuel Surcharge

For information on prevailing fuel surcharges, please refer to ups.com<sup>®</sup>.

\* Only available for customers using a UPS compliant shipping system that produces a smart label.

\*\* Not available for pickup in Asia.

# UPS Import Control is available only in countries where UPS pickup services are available.

#### Note:

Conditions and restrictions, including the UPS Terms and Conditions of Service, apply. For details, please contact our Customer Service Representatives or refer to ups.com.

Future Changes – Rates, charges, service explanation, and services are subject to change without prior notice.

For additional information and services, call our Customer Service Representatives at 1800-22-7171/1800-102-7171.



# Worldwide Zone Chart

## UPS Express Services

Destination	Export Zones				Import Zones			
	Express Plus	Express	Express Saver	Expedited	Express Plus	Express	Express Saver	Expedited
Afghanistan	-	-	8	8	9	9	9	-
Aland Island (Finland)*	-	-	6	6	7	7	7	7
Albania	-	-	8	8	9	9	9	-
Algeria	-	-	7	7	9	9	9	-
American Samoa	-	-	7	7	-	8	8	-
Andorra	-	-	4	4	-	-	-	-
Angola	-	-	8	8	8	8	8	-
Anguilla	-	-	7	7	8	8	8	-
Antigua and Barbuda	-	-	7	7	8	8	8	-
Argentina*	-	7	7	7	8	8	8	8
Armenia	-	-	8	8	9	9	9	-
Aruba	-	-	7	7	8	8	8	-
Australia*	-	-	3	3	2	2	2	2
Austria*	6	6	6	6	6	6	6	6
Azerbaijan	-	-	8	8	9	9	9	-
Azores (Portugal)*	-	-	6	6	-	7	7	-
Bahamas*	-	-	7	7	8	8	8	-
Bahrain	-	3	3	3	3	3	3	3
Bangladesh*	-	-	1	1	3	3	3	-
Barbados	-	-	7	7	8	8	8	-
Belarus/ Byelorussia*	-	-	8	8	9	9	9	-
Belgium	4	4	4	4	6	6	6	6
Belize	-	-	7	7	-	-	-	-
Benin	-	-	7	7	9	9	9	-
Bermuda	-	-	7	7	8	8	8	-
Bhutan	-	-	7	7	8	8	8	-
Bolivia	-	-	7	7	8	8	8	-
Bonaire, St. Eustatius, Saba	-	-	7	7	-	8	8	-
Bosnia and Herzegovina	-	8	8	8	9	9	9	-
Botswana	-	-	7	7	9	9	9	-
Brazil*	-	7	7	7	8	8	8	8
British Virgin Islands	-	-	7	7	8	8	8	-

Destination	Export Zones				Import Zones			
	Express Plus	Express	Express Saver	Expedited	Express Plus	Express	Express Saver	Expedited
Brunei*	-	-	7	7	8	8	8	-
Buesingen (Germany)*	-	-	4	4	-	-	-	-
Bulgaria	-	7	7	7	8	8	8	8
Burkina Faso	-	-	7	7	9	9	9	-
Burundi	-	-	7	7	-	9	9	-
Cambodia*	-	-	7	7	8	8	8	-
Cameroon	-	-	7	7	8	8	8	-
Campione/ Lake Lugano (Italy)*	-	-	4	4	6	6	6	6
Canada*	5	5	5	5	5	5	5	5
Canary Islands (Spain)*	-	-	4	4	-	6	6	-
Cape Verde	-	-	8	8	9	9	9	-
Cayman Islands	-	-	7	7	8	8	8	-
Central African Republic	-	-	7	7	-	-	-	-
Ceuta (Spain)*	-	-	4	4	-	-	-	-
Chad	-	-	7	7	9	9	9	-
Chile*	-	7	7	7	8	8	8	8
China (Excluding China South)*	3	3	3	3	4	4	4	4
China South**	9	9	9	9	10	10	10	10
Colombia*	-	-	7	7	8	8	8	8
Comoros	-	-	8	8	9	9	9	-
Congo (Brazzaville)	-	-	7	7	9	9	9	-
Congo, Democratic Republic of	-	-	7	7	9	9	9	-
Cook Islands	-	-	7	7	-	-	-	-
Costa Rica*	-	-	7	7	8	8	8	8
Cote d'Ivoire (Ivory Coast)	-	-	7	7	8	8	8	-
Croatia*	-	8	8	8	9	9	9	9
Curacao	-	-	7	7	-	8	8	-
Cyprus	-	-	7	7	8	8	8	-
Czech Republic*	7	7	7	7	8	8	8	8
Denmark*	4	4	4	4	7	7	7	7
Djibouti	-	-	7	7	9	9	9	-
Dominica	-	-	7	7	8	8	8	-

**International Shipments:** Visit [ups.com](http://ups.com)® or contact our Customer Service Representatives at 1800-22-7171 or 1800-102-7171 for information regarding international shipments, including:

- Service options
- Time in transit
- Guarantee details
- Billing options
- Service notes
- Commodity classifications
- Prohibited articles
- Destination/Origin Country served
- UPS Terms and Conditions of Service

\* Extended Area Surcharge or Remote Area Surcharge may be applicable to specific points within this country. For more details, please visit [ups.com](http://ups.com) or contact our Customer Service Representatives at 1800-22-7171 or 1800-102-7171.

+ China South includes Fujian and Guangdong Provinces only.

**Note:** Future Changes – Rates, charges, service explanation, and services are subject to change without prior notice.



# Worldwide Zone Chart

## UPS Express Services

(Continued)

Destination	Export Zones				Import Zones			
	Express Plus	Express	Express Saver	Expedited	Express Plus	Express	Express Saver	Expedited
Dominican Republic*	-	-	7	7	8	8	8	8
Ecuador*	-	-	7	7	8	8	8	8
Egypt	-	7	7	7	8	8	8	8
El Salvador*	-	-	7	7	8	8	8	8
England (United Kingdom)*	4	4	4	4	6	6	6	6
Equatorial Guinea	-	-	8	8	-	-	-	-
Eritrea	-	-	8	8	9	9	9	-
Estonia	-	8	8	8	9	9	9	9
Ethiopia	-	-	7	7	8	8	8	-
Faroe Islands	-	-	8	8	-	-	-	-
Fiji	-	-	7	7	8	8	8	-
Finland*	-	6	6	6	7	7	7	7
France*	4	4	4	4	6	6	6	6
French Guiana	-	-	7	7	-	-	-	-
French Polynesia	-	-	7	7	8	8	8	-
Gabon	-	-	7	7	9	9	9	-
Gambia	-	-	7	7	9	9	9	-
Georgia*	-	-	8	8	9	9	9	-
Germany*	4	4	4	4	6	6	6	6
Ghana	-	-	7	7	8	8	8	-
Gibraltar	-	-	7	7	8	8	8	-
Greece*	-	6	6	6	6	6	6	6
Greenland	-	-	8	8	-	-	-	-
Grenada	-	-	7	7	8	8	8	-
Guadeloupe*	-	-	7	7	8	8	8	-
Guam	-	-	7	7	8	8	8	-
Guatemala*	-	-	7	7	8	8	8	8
Guernsey (Channel Islands)	-	-	6	6	7	7	7	7
Guinea	-	-	7	7	9	9	9	-
Guinea-Bissau	-	-	7	7	9	9	9	-
Guyana*	-	-	7	7	8	8	8	-
Haiti*	-	-	7	7	8	8	8	8

Destination	Export Zones				Import Zones			
	Express Plus	Express	Express Saver	Expedited	Express Plus	Express	Express Saver	Expedited
Heligoland (Germany)*	-	-	4	4	6	6	6	6
Honduras*	-	-	7	7	8	8	8	8
Hong Kong	2	2	2	2	2	2	2	2
Hungary*	7	7	7	7	8	8	8	8
Iceland	-	7	7	7	8	8	8	-
Indonesia*	3	3	3	3	4	4	4	-
Iraq	-	-	7	7	9	9	9	-
Ireland, Republic of	6	6	6	6	6	6	6	6
Israel	-	7	7	7	8	8	8	8
Italy*	4	4	4	4	6	6	6	6
Jamaica*	-	-	7	7	8	8	8	-
Japan*	-	3	3	3	4	4	4	4
Jersey (Channel Islands)	-	-	6	6	7	7	7	7
Jordan	-	3	3	3	3	3	3	-
Kazakhstan*	-	8	8	8	9	9	9	9
Kenya	-	-	7	7	8	8	8	-
Kirghizia (Kyrgyzstan)	-	-	8	8	9	9	9	-
Kiribati	-	-	7	7	-	-	-	-
Korea, South	-	-	3	3	4	4	4	4
Kosovo	-	-	8	8	9	9	9	-
Kosrae (Micronesia, Federated States of)	-	-	7	7	-	-	-	-
Kuwait	-	3	3	3	3	3	3	3
Laos	-	-	7	7	8	8	8	-
Latvia	-	8	8	8	9	9	9	9
Lebanon	-	3	3	3	3	3	3	-
Lesotho	-	-	7	7	-	9	9	-
Liberia	-	-	7	7	9	9	9	-
Libyan Arab Jamahiriya	-	-	7	7	9	9	9	-
Liechtenstein*	-	4	4	4	7	7	7	7
Lithuania	-	8	8	8	9	9	9	9
Livigno (Italy)*	-	-	4	4	6	6	6	6
Luxembourg	4	4	4	4	6	6	6	6



# Worldwide Zone Chart

## UPS Express Services

(Continued)

Destination	Export Zones				Import Zones			
	Express Plus	Express	Express Saver	Expedited	Express Plus	Express	Express Saver	Expedited
Macau	-	-	2	2	2	2	2	-
Macedonia (FYROM)	-	-	8	8	9	9	9	-
Madagascar	-	7	7	7	8	8	8	-
Madeira (Portugal)*	-	-	6	6	-	7	7	-
Malawi	-	-	7	7	9	9	9	-
Malaysia*	-	2	2	2	3	3	3	3
Maldives	-	-	6	6	-	-	-	-
Mali	-	-	7	7	9	9	9	-
Malta	-	-	7	7	8	8	8	-
Marshall Islands	-	-	7	7	-	-	-	-
Martinique	-	-	7	7	8	8	8	-
Mauritania	-	-	7	7	8	8	8	-
Mauritius	-	-	6	6	9	9	9	-
Mayotte	-	-	8	8	9	9	9	-
Melilla (Spain)*	-	-	4	4	-	-	-	-
Mexico*	-	5	5	5	5	5	5	5
Micronesia, Federated States of	-	-	7	7	-	-	-	-
Moldova*	-	-	8	8	9	9	9	-
Monaco (France)*	-	4	4	4	6	6	6	6
Mongolia	-	-	7	7	8	8	8	-
Montenegro	-	-	8	8	9	9	9	-
Montserrat	-	-	7	7	8	8	8	-
Morocco	-	-	7	7	8	8	8	-
Mount Athos (Greece)*	-	-	6	6	6	6	6	6
Mozambique	-	-	7	7	-	9	9	-
Myanmar	-	-	7	7	-	8	8	8
Namibia	-	-	7	7	9	9	9	-
Nepal*	-	-	1	1	1	1	1	-
Netherlands (Holland)*	4	4	4	4	6	6	6	6
New Caledonia	-	-	6	6	7	7	7	-
New Zealand*	-	3	3	3	3	3	3	3
Nicaragua	-	-	7	7	8	8	8	8

Destination	Export Zones				Import Zones			
	Express Plus	Express	Express Saver	Expedited	Express Plus	Express	Express Saver	Expedited
Niger	-	-	7	7	9	9	9	-
Nigeria*	-	-	7	7	9	9	9	-
Norfolk Island (Australia)*	-	-	3	3	-	-	-	-
Northern Ireland (United Kingdom)*	4	4	4	4	6	6	6	6
Northern Mariana Islands*	-	-	6	6	7	7	7	-
Norway*	-	6	6	6	7	7	7	7
Oman	-	-	3	3	3	3	3	3
Pakistan*	-	3	3	3	1	1	1	1
Palau	-	-	7	7	-	-	-	-
Panama*	-	-	7	7	8	8	8	8
Papua New Guinea	-	-	7	7	-	-	-	-
Paraguay	-	-	7	7	8	8	8	-
Peru*	-	-	7	7	9	9	9	9
Philippines*	3	3	3	3	1	1	1	1
Poland*	7	7	7	7	8	8	8	8
Ponape (Micronesia, Federated States of)	-	-	7	7	-	-	-	-
Portugal*	6	6	6	6	7	7	7	7
Puerto Rico*	-	5	5	5	5	5	5	5
Qatar	-	3	3	3	3	3	3	3
Reunion Island	-	-	7	7	8	8	8	-
Romania	-	7	7	7	8	8	8	8
Rota (Northern Mariana Islands)*	-	-	6	6	-	-	7	-
Russia*	-	8	8	8	9	9	9	9
Rwanda	-	-	7	7	-	9	9	-
Saipan (Northern Mariana Islands)*	-	-	6	6	-	-	7	-
Samoa	-	-	7	7	8	8	8	-
San Marino	-	-	4	4	6	6	6	6
Saudi Arabia	-	3	3	3	3	3	3	3
Scotland (United Kingdom)*	4	4	4	4	6	6	6	6
Senegal	-	-	7	7	8	8	8	-
Serbia	-	-	8	8	9	9	9	-
Seychelles	-	-	7	7	9	9	9	-

**International Shipments:**

Visit [ups.com](http://ups.com)® or contact our Customer Service Representatives at 1800-22-7171 or 1800-102-7171 for information regarding international shipments, including:

- Service options
- Time in transit
- Guarantee details
- Billing options
- Service notes
- Commodity classifications
- Prohibited articles
- Destination/Origin Country served
- UPS Terms and Conditions of Service

\* Extended Area Surcharge or Remote Area Surcharge may be applicable to specific points within this country. For more details, please visit [ups.com](http://ups.com) or contact our Customer Service Representatives at 1800-22-7171 or 1800-102-7171.

**Note:**

Future Changes – Rates, charges, service explanation, and services are subject to change without prior notice.



# Worldwide Zone Chart

## UPS Express Services

(Continued)

Destination	Export Zones				Import Zones			
	Express Plus	Express	Express Saver	Expedited	Express Plus	Express	Express Saver	Expedited
Sierra Leone	-	-	7	7	9	9	9	-
Singapore*	-	-	2	2	1	1	1	1
Slovakia	-	7	7	7	8	8	8	8
Slovenia	-	8	8	8	9	9	9	9
Solomon Islands	-	-	7	7	-	-	-	-
South Africa*	-	7	7	7	8	8	8	8
Spain*	4	4	4	4	6	6	6	6
Sri Lanka*	-	-	1	1	1	1	1	-
St. Barthelemy	-	-	7	7	-	8	8	-
St. Christopher (St. Kitts)	-	-	7	7	-	8	8	-
St. Croix (U.S. Virgin Islands)	-	-	7	7	-	8	8	-
St. John (U.S. Virgin Islands)	-	-	7	7	-	8	8	-
St. Kitts and Nevis	-	-	7	7	8	8	8	8
St. Lucia	-	-	7	7	8	8	8	8
St. Maarten, St. Martin	-	-	7	7	-	8	8	-
St. Thomas (U.S. Virgin Islands)	-	-	7	7	-	8	8	-
St. Vincent & the Grenadines	-	-	7	7	8	8	8	-
Suriname	-	-	7	7	8	8	8	-
Swaziland	-	-	7	7	-	9	9	-
Sweden*	6	6	6	6	7	7	7	7
Switzerland*	4	4	4	4	7	7	7	7
Syrian Arab Republic	-	-	8	8	8	8	8	-
Tahiti (French Polynesia)	-	-	7	7	-	-	8	-
Taiwan*	-	-	2	2	2	2	2	2
Tajikistan*	-	-	8	8	-	9	9	-
Tanzania, United Republic of	-	-	7	7	8	8	8	-
Thailand*	-	2	2	2	1	1	1	1
Timor-Leste	-	-	7	7	-	-	-	-
Tinian (Northern Mariana Islands)*	-	-	6	6	-	-	7	-

Destination	Export Zones				Import Zones			
	Express Plus	Express	Express Saver	Expedited	Express Plus	Express	Express Saver	Expedited
Togo	-	-	7	7	9	9	9	-
Tonga	-	-	7	7	-	-	-	-
Tortola (British Virgin Islands)	-	-	7	7	-	8	8	-
Trinidad & Tobago*	-	-	7	7	8	8	8	-
Truk (Micronesia, Federated States of)	-	-	7	7	-	-	-	-
Tunisia	-	-	7	7	-	-	-	-
Turkey	-	7	7	7	8	8	8	8
Turks & Caicos Islands	-	-	7	7	-	7	7	-
Tuvalu	-	-	7	7	-	-	-	-
U.S. Virgin Islands	-	-	7	7	8	8	8	-
Uganda	-	-	7	7	8	8	8	-
Ukraine*	-	-	8	8	9	9	9	-
Union Islands (St. Vincent & the Grenadines)	-	-	7	7	-	8	8	-
United Arab Emirates	-	1	1	1	2	2	2	2
United Kingdom*	4	4	4	4	6	6	6	6
United States*	5	5	5	5	5	5	5	5
Uruguay	-	-	7	7	8	8	8	-
Uzbekistan	-	-	8	8	9	9	9	-
Vanuatu	-	-	7	7	-	-	-	-
Vatican City (Italy)*	4	4	4	4	6	6	6	6
Venezuela*	-	-	7	7	8	8	8	8
Vietnam*	-	-	2	2	2	2	2	2
Virgin Gorda (British Virgin Islands)	-	-	7	7	8	8	8	-
Wales (United Kingdom)*	4	4	4	4	6	6	6	6
Wallis & Futuna Islands	-	-	7	7	-	-	-	-
Yap (Micronesia, Federated States of)	-	-	7	7	-	-	-	-
Yemen, Republic of	-	-	3	3	3	3	3	-
Zambia	-	-	7	7	9	9	9	-
Zimbabwe	-	-	7	7	9	9	9	-

**International Shipments:** Visit ups.com® or contact our Customer Service Representatives at 1800-22-7171 or 1800-102-7171 for information regarding international shipments, including:

- Service options
- Time in transit
- Guarantee details
- Billing options
- Service notes
- Commodity classifications
- Prohibited articles
- Destination/Origin Country served
- UPS Terms and Conditions of Service

\* Extended Area Surcharge or Remote Area Surcharge may be applicable to specific points within this country. For more details, please visit ups.com or contact our Customer Service Representatives at 1800-22-7171 or 1800-102-7171.

**Note:** Future Changes – Rates, charges, service explanation, and services are subject to change without prior notice.



# Worldwide Zone Chart

## UPS Worldwide Express Freight™

Destination	Export	Import
Argentina*	7	8
Australia*	-	2
Austria*	6	6
Belgium	4	6
Brazil*	7	8
Bulgaria	-	8
Canada*	5	5
Chile*	7	8
China South**	-	10
China (Excluding China South)*	-	4
Colombia*	7	8
Costa Rica*	7	8
Czech Republic*	7	8
Denmark*	4	7
Dominican Republic*	7	8
Ecuador*	7	8
El Salvador*	7	8
Finland*	6	7
France*	4	6
Germany*	4	6
Greece*	6	6
Guatemala*	7	8
Honduras*	7	8
Hong Kong	-	2
Hungary*	7	8
Indonesia*	-	4
Ireland, Republic of	6	6
Israel	7	8
Italy*	4	6
Japan*	-	4

Destination	Export	Import
Korea, South	-	4
Liechtenstein*	4	7
Luxembourg	4	6
Malaysia*	-	3
Mexico*	5	5
Netherlands (Holland)*	4	6
New Zealand*	-	3
Nicaragua	7	8
Norway*	6	7
Panama*	7	8
Philippines*	-	1
Poland*	7	8
Portugal*	6	7
Puerto Rico*	5	5
Romania	-	8
Saudi Arabia	3	-
Serbia	-	9
Singapore*	-	1
Slovakia	7	8
Spain*	4	6
Sweden*	6	7
Switzerland*	4	7
Taiwan*	-	2
Thailand*	-	1
Turkey	7	8
United Arab Emirates	1	2
United Kingdom*	4	6
United States*	5	5
Vietnam*	-	2

+ China South includes Fujian and Guangdong Provinces only.

\* Extended Area Surcharge or Remote Area Surcharge may be applicable to specific points within this country. For more details, please visit [ups.com](http://ups.com)® or contact our Customer Service Representatives at 1800-22-7171/1800-102-7171.

**Note:**  
Future Changes – Rates, charges, service explanation, and services are subject to change without prior notice.

For additional information and services, call our Customer Service Representatives at 1800-22-7171/1800-102 7171.



# Export - UPS Worldwide Express®

Rates shown are in Indian Rupees and apply to shipments originating from India.

## UPS Worldwide Express

For all your urgent shipments, UPS Worldwide Express guarantees delivery by 10:30 am or before 12:00 noon to most parts of the U.S.; major cities in Canada, Europe and Asia; and selected areas in the Americas.\*

## UPS Worldwide Express Plus®

For time-definite delivery of your extremely urgent shipments, UPS Worldwide Express Plus guarantees delivery by 8:00 am/8:30 am to major cities in the U.S.; 8:30 am to Canada; 9:00 am to major Asian cities, over 4,000 U.S. cities and major business centres in Europe.\*

Add INR 2,000 to the appropriate UPS Worldwide Express rate for each UPS Worldwide Express Plus shipment.

For document shipments weighing over 5.0 kg, refer to the UPS Worldwide Express Non-Document rates.

\* Conditions and restrictions, including the UPS Terms and Conditions of Service, apply. For details, please contact our Customer Service Representatives or refer to [ups.com](http://ups.com)®.

+ There is a weight limit of 0.5 kg for documents enclosed in an Express Envelope. Document or Non-Document rates will apply for envelopes weighing over 0.5 kg.

**Note:**  
Future Changes – Rates, charges, service explanation, and services are subject to change without prior notice.

## UPS Express Envelope and Documents

Shipment Weight (kg)	Zone 1	Zone 2	Zone 3	Zone 4	Zone 5	Zone 6	Zone 7	Zone 8	Zone 9
UPS Express Envelope*	1,750	1,833	2,193	2,051	2,100	2,419	2,543	2,966	2,067
0.5	1,750	1,833	2,193	2,051	2,100	2,419	2,543	2,966	2,067
1.0	2,082	2,205	2,634	2,476	2,507	2,885	3,034	3,457	2,481
1.5	2,414	2,580	3,075	2,899	2,914	3,349	3,521	3,945	2,899
2.0	2,743	2,951	3,517	3,337	3,347	3,829	4,011	4,436	3,314
2.5	3,075	3,336	3,957	3,775	3,780	4,309	4,502	4,924	3,730
3.0	3,627	3,957	4,345	4,512	4,511	5,156	5,390	5,827	4,095
3.5	3,902	4,274	4,729	4,870	4,921	5,677	5,868	6,360	4,458
4.0	4,177	4,592	5,116	5,225	5,272	6,196	6,347	6,893	4,822
4.5	4,453	4,910	5,502	5,582	5,625	6,633	6,825	7,426	5,186
5.0	4,717	5,227	5,887	5,938	5,979	7,084	7,303	7,961	5,550

## Non-Documents

Shipment Weight (kg)	Zone 1	Zone 2	Zone 3	Zone 4	Zone 5	Zone 6	Zone 7	Zone 8	Zone 9
0.5	1,990	2,205	2,538	2,501	2,581	3,067	3,181	3,567	2,436
1.0	2,321	2,592	3,019	2,953	3,038	3,562	3,668	4,100	2,899
1.5	2,653	2,965	3,488	3,406	3,494	4,057	4,166	4,635	3,349
2.0	2,984	3,351	3,959	3,858	3,950	4,553	4,666	5,169	3,800
2.5	3,314	3,735	4,441	4,311	4,407	5,047	5,164	5,703	4,264
3.0	3,633	4,068	4,828	4,691	4,792	5,542	5,665	6,238	4,633
3.5	3,908	4,385	5,214	5,073	5,192	6,037	6,165	6,773	5,005
4.0	4,183	4,702	5,599	5,457	5,592	6,532	6,664	7,308	5,375
4.5	4,458	5,006	5,972	5,840	5,991	7,027	7,162	7,840	5,734
5.0	4,736	5,310	6,359	6,213	6,375	7,522	7,662	8,375	6,102
5.5	5,120	5,559	6,743	6,588	6,762	7,960	8,120	8,831	6,472
6.0	5,329	5,809	7,131	6,963	7,147	8,398	8,589	9,289	6,847
6.5	5,523	6,058	7,516	7,338	7,532	8,836	9,076	9,745	7,215
7.0	5,714	6,307	7,902	7,714	7,918	9,276	9,562	10,201	7,586
7.5	5,911	6,540	8,289	8,089	8,303	9,713	10,047	10,643	7,958
8.0	6,101	6,773	8,675	8,385	8,688	10,153	10,502	11,087	8,328
8.5	6,296	7,008	9,061	8,681	9,075	10,592	10,946	11,530	8,699
9.0	6,490	7,243	9,447	8,976	9,458	11,029	11,375	11,972	9,069
9.5	6,683	7,477	9,819	9,274	9,844	11,468	11,802	12,414	9,426
10.0	6,891	7,710	10,191	9,570	10,230	11,908	12,231	12,857	9,785
10.5	7,139	7,903	10,537	9,882	10,615	12,231	12,630	13,300	10,117
11.0	7,389	8,081	10,881	10,208	11,002	12,558	13,031	13,740	10,445
11.5	7,581	8,263	11,225	10,532	11,387	12,881	13,429	14,183	10,776
12.0	7,776	8,441	11,570	10,860	11,773	13,208	13,829	14,626	11,108
12.5	7,942	8,619	11,913	11,183	12,158	13,533	14,228	15,068	11,437
13.0	8,107	8,799	12,244	11,508	12,514	13,928	14,628	15,510	11,754
13.5	8,273	8,977	12,574	11,834	12,871	14,325	15,027	15,954	12,072
14.0	8,439	9,149	12,920	12,160	13,225	14,721	15,426	16,395	12,404
14.5	8,603	9,321	13,252	12,487	13,583	15,118	15,825	16,839	12,720
15.0	8,769	9,493	13,582	12,811	13,938	15,512	16,226	17,282	13,038
15.5	8,933	9,667	13,926	13,123	14,253	15,907	16,624	17,723	13,369
16.0	9,099	9,838	14,271	13,419	14,568	16,304	17,024	18,166	13,701
16.5	9,265	10,011	14,602	13,714	14,882	16,698	17,424	18,608	14,017
17.0	9,431	10,182	14,945	14,013	15,197	17,052	17,823	19,051	14,348
17.5	9,596	10,355	15,289	14,307	15,510	17,405	18,221	19,493	14,677
18.0	9,748	10,530	15,634	14,606	15,853	17,758	18,600	19,935	15,010
18.5	9,899	10,707	15,978	14,901	16,195	18,111	18,979	20,379	15,339
19.0	10,058	10,883	16,323	15,197	16,538	18,464	19,406	20,822	15,672
19.5	10,216	11,060	16,669	15,494	16,881	18,817	19,836	21,263	16,000
20.0	10,376	11,236	16,998	15,792	17,222	19,169	20,222	21,692	16,320

# Export - UPS Worldwide Express®

Rates shown are in Indian Rupees and apply to shipments originating from India.

## Non-Documents (Continued)

Shipment Weight (kg)	Zone 1	Zone 2	Zone 3	Zone 4	Zone 5	Zone 6	Zone 7	Zone 8	Zone 9
For shipment weight above 20 kg (Price per kg unless Deficit Weight <sup>#</sup> applies)									
21-44	500	515	767	717	814	863	939	982	736
45-70	419	461	703	660	738	749	871	877	674
71-99	418	452	690	658	724	717	863	863	663
100-299	414	451	683	650	721	651	855	849	656
300-499	412	447	669	613	710	613	799	841	641
500-999	399	432	663	596	707	598	773	829	636
Above 1000	374	410	659	582	703	582	741	820	633

## UPS 10 KG Box® and UPS 25 KG Box®

### UPS 10 KG Box (42 cm x 34 cm x 27 cm)

A special flat rate applies for shipments weighing up to 10 kg.\*

Shipment Weight (kg)	Flat Rate	Add on per kg up to 15 kg	For shipment weight above 15 kg
Zone 1	5,254	526	Apply the UPS Worldwide Express 25 KG Box Rates
Zone 2	5,390	538	
Zone 3	5,531	526	
Zone 4	6,803	609	
Zone 5	6,908	628	
Zone 6	6,917	622	
Zone 7	9,296	628	
Zone 8	9,296	659	
Zone 9	5,380	512	

### UPS 25 KG Box (50 cm x 45 cm x 34 cm)

A special flat rate applies for shipments weighing up to 25 kg.\*

Shipment Weight (kg)	Flat Rate	Add on per kg up to 30 kg	For shipment weight above 30 kg
Zone 1	8,753	528	Apply the UPS Worldwide Express Non-Document Rates
Zone 2	8,892	541	
Zone 3	8,964	528	
Zone 4	12,003	615	
Zone 5	12,444	628	
Zone 6	12,472	622	
Zone 7	13,875	628	
Zone 8	14,017	659	
Zone 9	8,718	514	

For UPS 10 KG Box and UPS 25 KG Box, the shipping charges will be billed to shipper, duty and tax will be billed to receiver. Conditions and restrictions, including the UPS Terms and Conditions of Service, apply. For details, please contact our Customer Service Representatives or refer to ups.com®.

\* The UPS 10 KG Box is designed to hold a maximum weight of 15 kg. The UPS 25 KG Box is designed to hold a maximum weight of 30 kg. It is not recommended that shipments sent in the respective boxes exceed the maximum weight limits.

# In some instances, shipments may be more economically charged if rated at a higher weight than the actual weight. The UPS billing system will automatically compute both rates and charge the lower of the two.

#### Note:

Future Changes - Rates, charges, service explanation, and services are subject to change without prior notice.

# Export - UPS Worldwide Express Saver™

Rates shown are in Indian Rupees and apply to shipments originating from India.

## UPS Worldwide Express Saver

For an economical alternative to UPS Worldwide Express®, UPS Worldwide Express Saver provides money-back guaranteed\* delivery by end-of-day, to over 220 countries and territories worldwide.

For document shipments weighing over 5.0 kg, refer to the UPS Worldwide Express Saver Non-Document rates.

## UPS Express Envelope and Documents

Shipment Weight (kg)	Zone 1	Zone 2	Zone 3	Zone 4	Zone 5	Zone 6	Zone 7	Zone 8	Zone 9
UPS Express Envelope <sup>+</sup>	1,651	1,729	2,069	1,935	1,981	2,282	2,399	2,798	1,950
0.5	1,651	1,729	2,069	1,935	1,981	2,282	2,399	2,798	1,950
1.0	1,964	2,080	2,485	2,336	2,365	2,722	2,862	3,261	2,341
1.5	2,277	2,434	2,901	2,735	2,749	3,159	3,322	3,722	2,735
2.0	2,588	2,784	3,318	3,148	3,158	3,612	3,784	4,185	3,126
2.5	2,901	3,147	3,733	3,561	3,566	4,065	4,247	4,645	3,519
3.0	3,422	3,733	4,099	4,257	4,256	4,864	5,085	5,497	3,863
3.5	3,681	4,032	4,461	4,594	4,642	5,356	5,536	6,000	4,206
4.0	3,941	4,332	4,826	4,929	4,974	5,845	5,988	6,503	4,549
4.5	4,201	4,632	5,191	5,266	5,307	6,258	6,439	7,006	4,892
5.0	4,450	4,931	5,554	5,602	5,641	6,683	6,890	7,510	5,236

## Non-Documents

Shipment Weight (kg)	Zone 1	Zone 2	Zone 3	Zone 4	Zone 5	Zone 6	Zone 7	Zone 8	Zone 9
0.5	1,877	2,080	2,394	2,359	2,435	2,893	3,001	3,365	2,298
1.0	2,190	2,445	2,848	2,786	2,866	3,360	3,460	3,868	2,735
1.5	2,503	2,797	3,291	3,213	3,296	3,827	3,930	4,373	3,159
2.0	2,815	3,161	3,735	3,640	3,726	4,295	4,402	4,876	3,585
2.5	3,126	3,524	4,190	4,067	4,158	4,761	4,872	5,380	4,023
3.0	3,427	3,838	4,555	4,425	4,521	5,228	5,344	5,885	4,371
3.5	3,687	4,137	4,919	4,786	4,898	5,695	5,816	6,390	4,722
4.0	3,946	4,436	5,282	5,148	5,275	6,162	6,287	6,894	5,071
4.5	4,206	4,723	5,634	5,509	5,652	6,629	6,757	7,396	5,409
5.0	4,468	5,009	5,999	5,861	6,014	7,096	7,228	7,901	5,757
5.5	4,830	5,244	6,361	6,215	6,379	7,509	7,660	8,331	6,106
6.0	5,027	5,480	6,727	6,569	6,742	7,923	8,103	8,763	6,459
6.5	5,210	5,715	7,091	6,923	7,106	8,336	8,562	9,193	6,807
7.0	5,391	5,950	7,455	7,277	7,470	8,751	9,021	9,624	7,157
7.5	5,576	6,170	7,820	7,631	7,833	9,163	9,478	10,041	7,508
8.0	5,756	6,390	8,184	7,910	8,196	9,578	9,908	10,459	7,857
8.5	5,940	6,611	8,548	8,190	8,561	9,992	10,326	10,877	8,207
9.0	6,123	6,833	8,912	8,468	8,923	10,405	10,731	11,294	8,556
9.5	6,305	7,054	9,263	8,749	9,287	10,819	11,134	11,711	8,892
10.0	6,501	7,274	9,614	9,028	9,651	11,234	11,539	12,129	9,231
10.5	6,735	7,456	9,941	9,323	10,014	11,539	11,915	12,547	9,544
11.0	6,971	7,624	10,265	9,630	10,379	11,847	12,293	12,962	9,854
11.5	7,152	7,795	10,590	9,936	10,742	12,152	12,669	13,380	10,166
12.0	7,336	7,963	10,915	10,245	11,107	12,460	13,046	13,798	10,479
12.5	7,492	8,131	11,239	10,550	11,470	12,767	13,423	14,215	10,790
13.0	7,648	8,301	11,551	10,857	11,806	13,140	13,800	14,632	11,089
13.5	7,805	8,469	11,862	11,164	12,142	13,514	14,176	15,051	11,389
14.0	7,961	8,631	12,189	11,472	12,476	13,888	14,553	15,467	11,702
14.5	8,116	8,793	12,502	11,780	12,814	14,262	14,929	15,886	12,000
15.0	8,273	8,956	12,813	12,086	13,149	14,634	15,308	16,304	12,300
15.5	8,427	9,120	13,138	12,380	13,446	15,007	15,683	16,720	12,612
16.0	8,584	9,281	13,463	12,659	13,743	15,381	16,060	17,138	12,925
16.5	8,741	9,444	13,775	12,938	14,040	15,753	16,438	17,555	13,224
17.0	8,897	9,606	14,099	13,220	14,337	16,087	16,814	17,973	13,536
17.5	9,053	9,769	14,424	13,497	14,632	16,420	17,190	18,390	13,846
18.0	9,196	9,934	14,749	13,779	14,956	16,753	17,547	18,807	14,160
18.5	9,339	10,101	15,074	14,058	15,278	17,086	17,905	19,225	14,471
19.0	9,489	10,267	15,399	14,337	15,602	17,419	18,308	19,643	14,785
19.5	9,638	10,434	15,725	14,617	15,925	17,752	18,713	20,059	15,094
20.0	9,789	10,600	16,036	14,898	16,247	18,084	19,077	20,464	15,396

\* Conditions and restrictions, including the UPS Terms and Conditions of Service, apply. For details, please contact our Customer Service Representatives or refer to ups.com®.

+ There is a weight limit of 0.5 kg for documents enclosed in an Express Envelope. Document or Non-Document rates will apply for envelopes weighing over 0.5 kg.

**Note:**  
Future Changes - Rates, charges, service explanation, and services are subject to change without prior notice.

Rates shown are in Indian Rupees and apply to shipments originating from India.

## Non-Documents (Continued)

Shipment Weight (kg)	Zone 1	Zone 2	Zone 3	Zone 4	Zone 5	Zone 6	Zone 7	Zone 8	Zone 9
For shipment weight above 20 kg (Price per kg unless Deficit Weight# applies)									
21-44	472	486	724	676	768	814	886	926	694
45-70	395	435	663	623	696	707	822	827	636
71-99	394	426	651	621	683	676	814	814	625
100-299	391	425	644	613	680	614	807	801	619
300-499	389	422	631	578	670	578	754	793	605
500-999	376	408	625	562	667	564	729	782	600
Above 1000	353	387	622	549	663	549	699	774	597

## UPS 10 KG Box® and UPS 25 KG Box®

### UPS 10 KG Box (42 cm x 34 cm x 27 cm)

A special flat rate applies for shipments weighing up to 10 kg.\*

Shipment Weight (kg)	Flat Rate	Add on per kg up to 15 kg	For shipment weight above 15 kg
Zone 1	4,957	495	Apply the UPS Worldwide Express Saver 25 KG Box Rates
Zone 2	5,086	508	
Zone 3	5,217	495	
Zone 4	6,418	574	
Zone 5	6,518	594	
Zone 6	6,527	589	
Zone 7	8,771	594	
Zone 8	8,771	620	
Zone 9	5,075	481	

### UPS 25 KG Box (50 cm x 45 cm x 34 cm)

A special flat rate applies for shipments weighing up to 25 kg.\*

Shipment Weight (kg)	Flat Rate	Add on per kg up to 30 kg	For shipment weight above 30 kg
Zone 1	8,258	497	Apply the UPS Worldwide Express Saver Non-Documents Rates
Zone 2	8,391	510	
Zone 3	8,457	497	
Zone 4	11,326	580	
Zone 5	11,740	594	
Zone 6	11,767	589	
Zone 7	13,090	594	
Zone 8	13,225	620	
Zone 9	8,227	484	

For UPS 10 KG Box and UPS 25 KG Box, the shipping charges will be billed to shipper, duty and tax will be billed to receiver. Conditions and restrictions, including the UPS Terms and Conditions of Service, apply. For details, please contact our Customer Service Representatives or refer to [ups.com](http://ups.com)®.

\* The UPS 10 KG Box is designed to hold a maximum weight of 15 kg. The UPS 25 KG Box is designed to hold a maximum weight of 30 kg. It is not recommended that shipments sent in the respective boxes exceed the maximum weight limits.

# In some instances, shipments may be more economically charged if rated at a higher weight than the actual weight. The UPS billing system will automatically compute both rates and charge the lower of the two.

**Note:**

Future Changes - Rates, charges, service explanation, and services are subject to change without prior notice.

# Export - UPS Worldwide Expedited®

Rates shown are in Indian Rupees and apply to shipments originating from India.

## UPS Worldwide Expedited

For your important shipments that do not require urgent express delivery, UPS Worldwide Expedited delivers in as little as three business days within Asia and from Asia to major business centres in Europe and North and South America.

## Non-Documents

Shipment Weight (kg)	Zone 1	Zone 2	Zone 3	Zone 4	Zone 5	Zone 6	Zone 7	Zone 8	Zone 9
1.0	2,114	2,212	2,628	2,427	2,464	3,011	3,177	3,403	2,523
2.0	2,713	2,706	3,375	3,134	3,116	3,770	4,037	4,278	3,242
3.0	3,286	3,187	4,122	3,840	3,768	4,529	4,898	5,154	3,959
4.0	3,780	3,682	4,761	4,425	4,421	5,289	5,759	6,028	4,569
5.0	4,275	4,150	5,398	5,014	5,074	6,048	6,593	6,901	5,181
6.0	4,731	4,529	5,997	5,600	5,727	6,770	7,294	7,654	5,755
7.0	5,070	4,905	6,555	6,132	6,379	7,490	7,994	8,394	6,293
8.0	5,409	5,270	7,116	6,666	7,031	8,185	8,692	9,121	6,831
9.0	5,748	5,633	7,675	7,159	7,685	8,877	9,393	9,849	7,368
10.0	6,086	5,998	8,235	7,652	8,336	9,557	10,093	10,578	7,905
11.0	6,404	6,284	8,755	8,146	8,826	10,064	10,684	11,303	8,404
12.0	6,697	6,570	9,275	8,637	9,316	10,572	11,263	12,031	8,906
13.0	6,984	6,843	9,770	9,132	9,804	11,132	11,844	12,759	9,380
14.0	7,271	7,117	10,265	9,624	10,295	11,694	12,422	13,486	9,854
15.0	7,559	7,376	10,760	10,104	10,784	12,254	13,000	14,213	10,329
16.0	7,688	7,637	11,228	10,572	11,274	12,815	13,593	14,939	10,779
17.0	7,949	7,898	11,697	11,038	11,763	13,373	14,185	15,667	11,228
18.0	8,209	8,158	12,164	11,506	12,253	13,936	14,777	16,396	11,679
19.0	8,339	8,417	12,634	11,973	12,744	14,496	15,367	17,122	12,129
20.0	8,471	8,678	13,076	12,439	13,232	15,056	15,960	17,850	12,553
For shipment weight above 20 kg (Price per kg unless Deficit Weight* applies)									
21-44	394	405	570	564	640	679	738	772	579
45-70	329	362	520	520	581	590	685	690	530
71-99	328	355	479	518	570	564	679	679	520
100-299	326	354	472	510	567	511	673	668	516
300-499	325	352	469	482	559	494	628	661	504
500-999	314	340	465	469	556	489	608	652	499
Above 1000	295	322	464	458	553	482	582	646	498

# In some instances, shipments may be more economically charged if rated at a higher weight than the actual weight. The UPS billing system will automatically compute both rates and charge the lower of the two.

### Note:

Future Changes – Rates, charges, service explanation, and services are subject to change without prior notice.

# Import - UPS Worldwide Express®

Rates shown are in Indian Rupees and apply to shipments to India.

## UPS Express Envelope and Documents

Shipment Weight (kg)	Zone 1	Zone 2	Zone 3	Zone 4	Zone 5	Zone 6	Zone 7	Zone 8	Zone 9	Zone 10
UPS Express Envelope <sup>†</sup>	1,328	2,057	2,476	1,889	3,659	3,753	6,500	6,497	4,471	1,813
0.5	1,328	2,057	2,476	1,889	3,659	3,753	6,500	6,497	4,471	1,813
1.0	1,900	2,600	3,409	2,600	4,250	5,621	8,576	7,363	5,290	2,495
1.5	2,473	3,144	4,341	3,308	4,838	6,518	10,020	8,229	6,108	3,176
2.0	3,044	3,687	5,272	4,018	5,427	7,414	11,464	9,096	6,925	3,856
2.5	3,616	4,232	6,202	4,728	6,016	8,310	12,909	9,962	7,742	4,539
3.0	4,101	4,888	7,362	5,405	6,604	9,964	15,353	11,946	8,434	5,189
3.5	4,585	5,453	8,518	6,084	7,192	10,908	16,391	13,098	9,126	5,841
4.0	5,069	6,018	9,675	6,763	7,783	11,854	17,430	14,253	9,818	6,490
4.5	5,552	6,583	10,832	7,440	8,369	12,796	18,469	15,407	10,508	7,141
5.0	6,039	7,149	11,990	8,119	8,957	13,741	19,504	16,560	11,199	7,791

## UPS Worldwide Express

For all your urgent import shipments, UPS Worldwide Express guarantees delivery by 12:00 noon to selected areas in your locations.\*

## UPS Worldwide Express Plus®

For time-definite delivery of your extremely urgent shipments, UPS Worldwide Express Plus guarantees delivery by 9:00 am to selected areas in your locations.\*

Add INR 2,000 to the appropriate UPS Worldwide Express rate for each UPS Worldwide Express Plus shipment.

For document shipments weighing over 5.0 kg, refer to the UPS Worldwide Express Non-Document rates.

## Non-Documents

Shipment Weight (kg)	Zone 1	Zone 2	Zone 3	Zone 4	Zone 5	Zone 6	Zone 7	Zone 8	Zone 9	Zone 10
0.5	2,048	3,183	6,390	2,604	3,883	6,196	8,588	7,227	5,881	2,499
1.0	2,702	3,708	7,294	3,291	4,506	7,114	10,650	8,373	6,769	3,160
1.5	3,359	4,230	8,196	3,978	5,129	8,031	11,992	9,522	7,657	3,819
2.0	4,013	4,756	9,101	4,665	5,752	8,947	13,335	10,672	8,545	4,480
2.5	4,670	5,280	10,002	5,353	6,377	9,862	14,678	11,820	9,433	5,140
3.0	5,195	5,778	10,844	5,907	7,000	10,765	15,740	12,968	10,173	5,673
3.5	5,717	6,275	11,684	6,464	7,627	11,665	16,804	14,118	10,913	6,207
4.0	6,241	6,773	12,526	7,099	8,249	12,568	17,867	15,266	11,652	6,817
4.5	6,764	7,273	13,367	7,733	8,874	13,468	18,931	16,415	12,390	7,426
5.0	7,289	7,770	14,208	8,369	9,499	14,370	19,996	17,563	13,128	8,034
5.5	7,682	8,163	14,679	9,015	10,165	15,015	20,951	18,712	13,743	8,655
6.0	8,075	8,556	15,151	9,663	10,833	15,662	21,908	19,861	14,358	9,276
6.5	8,401	8,951	15,622	10,309	11,501	16,308	22,866	21,008	14,975	9,899
7.0	8,663	9,278	16,094	10,956	12,168	16,953	23,822	22,157	15,588	10,521
7.5	8,926	9,606	16,565	11,604	12,836	17,599	24,781	23,306	16,203	11,142
8.0	9,188	9,931	17,155	12,251	13,293	18,246	25,706	24,128	16,752	11,764
8.5	9,450	10,259	17,743	12,899	13,752	18,891	26,627	24,946	17,298	12,384
9.0	9,844	10,586	18,331	13,547	14,211	19,537	27,553	25,766	17,844	13,007
9.5	10,236	10,912	18,921	14,193	14,669	20,183	28,476	26,588	18,392	13,627
10.0	10,632	11,240	19,509	14,841	15,128	20,829	29,399	27,407	18,940	14,250
10.5	11,024	11,568	19,903	15,463	15,623	21,259	30,543	28,366	19,349	14,845
11.0	11,418	11,894	20,297	16,084	16,122	21,690	31,688	29,323	19,759	15,442
11.5	11,811	12,221	20,691	16,706	16,614	22,121	32,830	30,281	20,172	16,040
12.0	12,205	12,548	21,083	17,327	17,111	22,552	33,974	31,239	20,581	16,638
12.5	12,597	12,875	21,411	17,949	17,604	22,982	35,119	32,196	20,992	17,233
13.0	12,991	13,203	21,737	18,504	18,088	23,414	36,248	33,155	21,402	17,768
13.5	13,385	13,530	22,066	19,060	18,570	23,846	37,378	34,113	21,815	18,302
14.0	13,779	13,856	22,393	19,615	19,052	24,278	38,508	35,071	22,226	18,835
14.5	14,173	14,183	22,718	20,172	19,536	24,710	39,638	36,028	22,637	19,372
15.0	14,565	14,510	23,044	20,727	20,018	25,141	40,765	36,988	23,048	19,904
15.5	14,959	14,838	23,375	21,283	20,501	25,424	41,897	37,942	23,459	20,437
16.0	15,285	15,165	23,702	21,839	20,984	25,707	43,025	38,901	23,799	20,972
16.5	15,614	15,492	24,027	22,395	21,466	25,989	44,154	39,858	24,140	21,505
17.0	15,940	15,817	24,354	22,951	21,949	26,271	45,285	40,816	24,483	22,040
17.5	16,306	16,145	24,681	23,507	22,430	26,619	46,414	41,775	24,824	22,572
18.0	16,674	16,475	25,010	24,064	22,913	26,965	47,544	42,733	25,167	23,107
18.5	17,041	16,801	25,336	24,617	23,396	27,310	48,673	43,279	25,507	23,640
19.0	17,407	17,126	25,663	25,174	23,879	27,711	49,802	43,553	25,889	24,173
19.5	17,733	17,416	25,989	25,729	24,361	28,242	50,799	43,827	26,273	24,710
20.0	18,061	17,706	26,317	26,286	24,414	28,775	51,798	44,100	26,655	25,243

\* Conditions and restrictions, including the UPS Terms and Conditions of Service, apply. For details, please contact our Customer Service Representatives or refer to ups.com®.

+ For correspondence and documents only. There is a weight limit of 0.5 kg. Document or Non-Documents rates will apply for envelopes weighing over 0.5 kg.

**Note:**  
Future Changes - Rates, charges, service explanation, and services are subject to change without prior notice.

# Import - UPS Worldwide Express®

Rates shown are in Indian Rupees and apply to shipments to India.

## Non-Documents (Continued)

Shipment Weight (kg)	Zone 1	Zone 2	Zone 3	Zone 4	Zone 5	Zone 6	Zone 7	Zone 8	Zone 9	Zone 10
For shipment weight above 20 kg (Price per kg unless Deficit Weight* applies)										
21-44	851	855	1,244	1,265	1,205	1,421	2,474	1,988	1,203	1,215
45-70	796	726	1,220	1,253	1,096	1,358	2,185	1,957	1,151	1,203
71-99	774	677	1,187	1,251	1,089	1,284	2,106	1,946	1,119	1,202
100-299	686	676	1,065	1,249	1,087	1,151	2,105	1,945	1,013	1,199
300-499	610	675	976	1,248	1,085	1,048	2,104	1,944	933	1,198
500-999	538	674	907	1,246	1,082	972	2,100	1,940	891	1,196
Above 1000	501	673	906	1,243	1,081	970	2,098	1,933	863	1,193

# In some instances, shipments may be more economically charged if rated at a higher weight than the actual weight. The UPS billing system will automatically compute both rates and charge the lower of the two.

**Note:**  
Future Changes –  
Rates, charges, service explanation, and services are subject to change without prior notice.

Rates shown are in Indian Rupees and apply to shipments to India.

## UPS Express Envelope and Documents

Shipment Weight (kg)	Zone 1	Zone 2	Zone 3	Zone 4	Zone 5	Zone 6	Zone 7	Zone 8	Zone 9	Zone 10
UPS Express Envelope*	1,253	1,941	2,336	1,782	3,452	3,541	6,132	6,129	4,218	1,710
0.5	1,253	1,941	2,336	1,782	3,452	3,541	6,132	6,129	4,218	1,710
1.0	1,792	2,453	3,216	2,453	4,009	5,303	8,091	6,946	4,991	2,354
1.5	2,333	2,966	4,095	3,121	4,564	6,149	9,453	7,763	5,762	2,996
2.0	2,872	3,478	4,974	3,791	5,120	6,994	10,815	8,581	6,533	3,638
2.5	3,411	3,992	5,851	4,460	5,675	7,840	12,178	9,398	7,304	4,282
3.0	3,869	4,611	6,945	5,099	6,230	9,400	14,484	11,270	7,957	4,895
3.5	4,325	5,144	8,036	5,740	6,785	10,291	15,463	12,357	8,609	5,510
4.0	4,782	5,677	9,127	6,380	7,342	11,183	16,443	13,446	9,262	6,123
4.5	5,238	6,210	10,219	7,019	7,895	12,072	17,424	14,535	9,913	6,737
5.0	5,697	6,744	11,311	7,659	8,450	12,963	18,400	15,623	10,565	7,350

## UPS Worldwide Express Saver

For an economical alternative to UPS Worldwide Express®, UPS Worldwide Express Saver provides money-back guaranteed\* delivery by end-of-day, to over 220 countries and territories worldwide.

For document shipments weighing over 5.0 kg, refer to the UPS Worldwide Express Saver Non-Document rates.

## Non-Documents

Shipment Weight (kg)	Zone 1	Zone 2	Zone 3	Zone 4	Zone 5	Zone 6	Zone 7	Zone 8	Zone 9	Zone 10
0.5	1,932	3,003	6,028	2,457	3,663	5,845	8,102	6,818	5,548	2,358
1.0	2,549	3,498	6,881	3,105	4,251	6,711	10,047	7,899	6,386	2,981
1.5	3,169	3,991	7,732	3,753	4,839	7,576	11,313	8,983	7,224	3,603
2.0	3,786	4,487	8,586	4,401	5,426	8,441	12,580	10,068	8,061	4,226
2.5	4,406	4,981	9,436	5,050	6,016	9,304	13,847	11,151	8,899	4,849
3.0	4,901	5,451	10,230	5,573	6,604	10,156	14,849	12,234	9,597	5,352
3.5	5,393	5,920	11,023	6,098	7,195	11,005	15,853	13,319	10,295	5,856
4.0	5,888	6,390	11,817	6,697	7,782	11,857	16,856	14,402	10,992	6,431
4.5	6,381	6,861	12,610	7,295	8,372	12,706	17,859	15,486	11,689	7,006
5.0	6,876	7,330	13,404	7,895	8,961	13,557	18,864	16,569	12,385	7,579
5.5	7,247	7,701	13,848	8,505	9,590	14,165	19,765	17,653	12,965	8,165
6.0	7,618	8,072	14,293	9,116	10,220	14,775	20,668	18,737	13,545	8,751
6.5	7,925	8,444	14,738	9,725	10,850	15,385	21,572	19,819	14,127	9,339
7.0	8,173	8,753	15,183	10,336	11,479	15,993	22,474	20,903	14,706	9,925
7.5	8,421	9,062	15,627	10,947	12,109	16,603	23,378	21,987	15,286	10,511
8.0	8,668	9,369	16,184	11,558	12,741	17,213	24,251	22,762	15,804	11,098
8.5	8,915	9,678	16,739	12,169	13,374	17,822	25,120	23,534	16,319	11,683
9.0	9,287	9,987	17,293	12,780	14,007	18,431	25,993	24,308	16,834	12,271
9.5	9,657	10,294	17,850	13,390	14,639	19,041	26,864	25,083	17,351	12,856
10.0	10,030	10,604	18,405	14,001	15,272	19,650	27,735	25,856	17,868	13,443
10.5	10,400	10,913	18,776	14,588	15,739	20,056	28,814	26,760	18,254	14,005
11.0	10,772	11,221	19,148	15,174	16,209	20,462	29,894	27,663	18,641	14,568
11.5	11,142	11,529	19,520	15,760	16,674	20,869	30,972	28,567	19,030	15,132
12.0	11,514	11,838	19,890	16,346	17,142	21,275	32,051	29,471	19,416	15,696
12.5	11,884	12,146	20,199	16,933	17,608	21,681	33,131	30,374	19,804	16,258
13.0	12,256	12,456	20,507	17,457	18,064	22,089	34,196	31,278	20,191	16,762
13.5	12,627	12,764	20,817	17,981	18,519	22,496	35,262	32,182	20,580	17,266
14.0	12,999	13,072	21,125	18,505	18,974	22,904	36,328	33,086	20,968	17,769
14.5	13,371	13,380	21,432	19,030	19,430	23,311	37,394	33,989	21,356	18,275
15.0	13,741	13,689	21,740	19,554	19,885	23,718	38,458	34,894	21,743	18,777
15.5	14,112	13,998	22,052	20,078	20,341	23,985	39,525	35,794	22,131	19,280
16.0	14,420	14,307	22,360	20,603	20,796	24,252	40,590	36,699	22,452	19,785
16.5	14,730	14,615	22,667	21,127	21,251	24,518	41,655	37,602	22,774	20,288
17.0	15,038	14,922	22,975	21,652	21,707	24,784	42,722	38,506	23,097	20,792
17.5	15,383	15,231	23,284	22,176	22,160	25,112	43,787	39,410	23,419	21,294
18.0	15,730	15,542	23,594	22,702	22,616	25,439	44,853	40,314	23,742	21,799
18.5	16,076	15,850	23,902	23,224	23,072	25,764	45,918	41,218	24,063	22,302
19.0	16,422	16,157	24,210	23,749	23,527	26,142	46,983	42,122	24,424	22,805
19.5	16,729	16,430	24,518	24,273	23,982	26,643	47,924	43,026	24,786	23,311
20.0	17,039	16,704	24,827	24,798	24,437	27,146	48,866	43,929	25,146	23,814

\* Conditions and restrictions, including the UPS Terms and Conditions of Service, apply. For details, please contact our Customer Service Representatives or refer to ups.com®.

+ For correspondence and documents only. There is a weight limit of 0.5 kg. Document or Non-Document rates will apply for envelopes weighing over 0.5 kg.

**Note:**  
Future Changes – Rates, charges, service explanation, and services are subject to change without prior notice.

Rates shown are in Indian Rupees and apply to shipments to India.

## Non-Documents (Continued)

Shipment Weight (kg)	Zone 1	Zone 2	Zone 3	Zone 4	Zone 5	Zone 6	Zone 7	Zone 8	Zone 9	Zone 10
For shipment weight above 20 kg (Price per kg unless Deficit Weight* applies)										
21-44	803	807	1,174	1,193	1,137	1,341	2,334	1,875	1,135	1,146
45-70	751	685	1,151	1,182	1,034	1,281	2,061	1,846	1,086	1,135
71-99	730	639	1,120	1,180	1,027	1,211	1,987	1,836	1,056	1,134
100-299	647	638	1,005	1,178	1,025	1,086	1,986	1,835	956	1,131
300-499	575	637	921	1,177	1,024	989	1,985	1,834	880	1,130
500-999	508	636	856	1,175	1,021	917	1,981	1,830	841	1,128
Above 1000	473	635	855	1,173	1,020	915	1,979	1,824	814	1,125

# In some instances, shipments may be more economically charged if rated at a higher weight than the actual weight. The UPS billing system will automatically compute both rates and charge the lower of the two.

**Note:**  
Future Changes –  
Rates, charges, service explanation, and services are subject to change without prior notice.

# Import - UPS Worldwide Expedited®

Rates shown are in Indian Rupees and apply to shipments to India.

## UPS Worldwide Expedited

For your important shipments that do not require urgent express delivery, UPS Worldwide Expedited delivers in as little as three business days.

## Non-Documents

Shipment Weight (kg)	Zone 1	Zone 2	Zone 3	Zone 4	Zone 5	Zone 6	Zone 7	Zone 8	Zone 9	Zone 10
1.0	2,409	3,419	6,627	2,974	4,033	6,375	9,667	7,592	6,178	2,856
2.0	3,572	4,301	8,137	4,210	5,143	7,955	12,053	9,642	7,680	4,040
3.0	4,621	5,184	9,649	5,307	6,252	9,537	14,184	11,693	9,090	5,094
4.0	5,548	6,066	11,161	6,267	7,363	11,117	16,066	13,743	10,501	6,013
5.0	6,289	6,949	12,672	7,352	8,473	12,698	17,948	15,791	11,791	7,057
6.0	6,784	7,590	13,519	8,499	9,635	13,826	19,578	17,713	12,850	8,157
7.0	7,278	8,230	14,367	9,672	10,795	14,956	21,210	19,714	13,909	9,282
8.0	7,770	8,872	15,214	10,830	11,801	16,086	22,841	21,442	14,970	10,394
9.0	8,327	9,513	16,061	11,990	12,614	17,215	24,471	22,900	15,873	11,507
10.0	8,994	10,154	16,909	13,163	13,428	18,345	26,102	24,358	16,778	12,634
11.0	9,662	10,591	17,581	14,284	14,241	19,096	28,109	26,036	17,467	13,712
12.0	10,331	11,026	18,251	15,395	15,054	19,849	30,115	27,738	18,159	14,777
13.0	10,999	11,463	18,807	16,468	15,905	20,601	32,123	29,440	18,849	15,807
14.0	11,665	11,899	19,362	17,453	16,757	21,354	34,129	31,143	19,542	16,753
15.0	12,333	12,335	19,918	18,438	17,595	22,107	36,136	32,846	20,232	17,701
16.0	12,877	12,916	20,473	19,425	18,433	22,483	38,016	34,549	20,717	18,647
17.0	13,420	13,497	21,029	20,409	19,272	22,862	39,898	36,250	21,201	19,593
18.0	13,965	14,078	21,585	21,396	20,110	23,363	41,781	37,953	21,687	20,541
19.0	14,507	14,659	22,140	22,380	20,949	24,114	43,662	38,470	22,175	21,487
20.0	15,052	15,240	22,696	23,365	21,373	24,867	45,294	38,922	22,659	22,433
For shipment weight above 20 kg (Price per kg unless Deficit Weight* applies)										
21-44	560	635	896	1,062	955	1,014	1,998	1,616	860	1,020
45-70	538	607	878	1,015	912	969	1,911	1,544	823	976
71-99	483	557	786	951	834	856	1,764	1,403	744	915
100-299	437	506	714	897	767	768	1,624	1,353	676	863
300-499	392	469	647	872	728	716	1,459	1,320	640	837
500-999	360	449	606	858	686	676	1,383	1,311	629	822
Above 1000	331	438	594	849	679	630	1,365	1,308	607	815

\* In some instances, shipments may be more economically charged if rated at a higher weight than the actual weight. The UPS billing system will automatically compute both rates and charge the lower of the two.

**Note:**  
Future Changes – Rates, charges, service explanation, and services are subject to change without prior notice.

Rates shown are in Indian Rupees and apply to shipments to/from India.

## Export (Door-to-Door, Drop-off, Hold at Location, and Drop-off & Hold at Location Rates)\*

Shipment Weight (kg)	Zone 1	Zone 2	Zone 3	Zone 4	Zone 5	Zone 6	Zone 7
Price per kg unless Deficit Weight# applies							
71-99	394	-	651	621	683	676	814
100-299	391	-	644	613	680	614	807
300-499	389	-	631	578	670	578	754
500-999	376	-	625	562	667	564	729
Above 1000	353	-	622	549	663	549	699
Minimum Rate	27,974	-	46,221	44,091	48,493	47,996	57,794

## UPS Worldwide Express Freight

Guaranteed end-of-day delivery for palletised shipments over 70 kg to more than 50 countries and territories worldwide. Delivery is typically within one to three business days, depending on destination.

## Import (Door-to-Door, Drop-off, Hold at Location, and Drop-off & Hold at Location Rates)\*

Shipment Weight (kg)	Zone 1	Zone 2	Zone 3	Zone 4	Zone 5	Zone 6	Zone 7	Zone 8	Zone 9	Zone 10
Price per kg unless Deficit Weight# applies										
71-99	730	639	1,120	1,180	1,027	1,211	1,987	1,836	1,056	1,134
100-299	647	638	1,005	1,178	1,025	1,086	1,986	1,835	956	1,131
300-499	575	637	921	1,177	1,024	989	1,985	1,834	880	1,130
500-999	508	636	856	1,175	1,021	917	1,981	1,830	841	1,128
Above 1000	473	635	855	1,173	1,020	915	1,979	1,824	814	1,125
Minimum Rate	51,830	45,369	79,520	83,780	72,917	85,981	141,077	130,356	74,976	80,514

- \* Door-to-Door refers to shipments sent from sender's door to recipient's door.
- \* Drop-off refers to shipments that are dropped off at a UPS origin facility and delivered to the recipient's door.
- \* Hold at Location refers to shipments that are picked up at the sender's location and held at a UPS destination facility for pick up.
- \* Drop-off and Hold at Location refer to shipments that are dropped off at a UPS origin facility and held at a UPS destination facility for pick up.

# In some instances, shipments may be more economically charged if rated at a higher weight than the actual weight. The UPS billing system will automatically compute both rates and charge the lower of the two.

### Note:

Conditions and restrictions, including the UPS Terms and Conditions of Service, apply. For details, please contact our Customer Service Representatives or refer to ups.com®.

### Future Changes –

Rates, charges, service explanation, and services are subject to change without prior notice.

# Terms and Conditions of Service

## Effective July 13, 2015

### THE RULES RELATING TO LIABILITY ESTABLISHED BY THE WARSAW CONVENTION AND ANY AMENDMENTS THERETO SHALL APPLY TO THE INTERNATIONAL CARRIAGE OF ANY SHIPMENT HEREUNDER INSOFAR AS THE SAME IS GOVERNED THEREBY.

United Parcel Service, which for purposes of these Terms and Conditions shall mean the United Parcel Service operating company in the country of departure ("UPS") is engaged in the international transportation of small packages (including "Express Envelopes") and services incidental or additional thereto. All shipments are subject to the terms and conditions contained in the UPS Rate and Service Guide (stated at ups.com® and maintained at local UPS offices), the UPS source document for each shipment, and those prescribed by the applicable law of the jurisdiction where the shipment originates.

"Shipper" refers to the party contracting with UPS for services.

Where carriage by air involves an ultimate destination or stop outside the country of origin the Warsaw Convention may apply. The rules relating to liability established by the Convention for the Unification of Certain Rules Relating to International Carriage by Air signed at Warsaw, Poland, on October 12, 1929, and any amendments thereto shall apply to the international carriage of any shipment insofar as the same is governed thereby. There are no stopping places agreed upon at the time of tender of the shipment, and UPS reserves the right to route the shipment in any way UPS deems appropriate. Notwithstanding any clause to the contrary, international carriage by road may be subject to the provisions of the Convention on the Contract for the International Carriage of Goods by Road signed at Geneva on 19th May 1956 and any amendments thereto ("the CMR Convention").

UPS may engage subcontractors to perform services and contracts both on its own behalf and on behalf of its servants, agents and subcontractors each of whom shall have the benefit of these terms. No such party has the authority to waive or vary any of these terms. All packages or pallets covered under a single UPS Waybill/consignment note (the "UPS Waybill") shall be considered a single shipment. A shipment may be carried via any intermediate stopping places that UPS deems appropriate.

Unless otherwise agreed in writing prior to the tender of the shipment, the service to be provided by UPS is limited to the pickup, transportation, customs clearance where applicable and delivery of the shipment. The shipper acknowledges that shipments will be consolidated with those of other shippers for transport and that UPS may not monitor the inbound and outbound movement of individual shipments at all handling centers.

### Commodities Handled and Restrictions on Service

UPS offers transportation of general commodities, as usually defined, subject to the following restrictions:

- (i) Subject to the terms and conditions relevant to UPS Worldwide Express Freight™ below, no service shall be rendered in the transportation of any packages or articles with an actual weight of more than 70 kilograms (or 150 lbs) or exceed 270 centimeters (or 108 inches) in length or a total of 419 centimeters (or 165 inches) in length and girth combined. If found in the UPS system, they are subject to one or more of the following additional charges: Over Maximum Weight, Over Maximum Length, or Over Maximum Size. UPS Worldwide Express Freight pallets that exceed maximum size and weight limits, as set forth (in the UPS Rate and Service Guide) at ups.com® will not be accepted for transportation and will be returned to sender if found in the UPS system.
- (ii) No service shall be rendered in the transportation of any packages or articles with a value in excess of USD 50,000 (or the local currency equivalent). Shipments containing jewelry (not including costume jewelry) having a value of more than USD 500 per package or per pallet (or the local currency equivalent) are not accepted for transportation. UPS Worldwide Express Freight consignments having a value or declared value of more than USD 100,000 per pallet will not be accepted for transportation. UPS's maximum liability for such consignments shall not exceed the greater of the declared value or USD 100,000 per pallet.
- (iii) No service shall be rendered in the transportation of packages or pallets containing any prohibited article listed on the UPS website (ups.com®), including, but not limited to, articles of unusual value (such as coins, currency, postage stamps, negotiable instruments (except checks), money orders, unset precious stones, industrial diamonds), and dangerous goods. Refer to UPS Rate and Service Guide for more information about dangerous goods. Under applicable law, certain goods may only be transported under prescribed conditions and certain goods are prohibited from transportation by air.
- (iv) UPS does not regularly provide service for shipments containing live animals. UPS will only accept live animal shipments on an exception basis. Transportation for shipments containing live animals is limited, must be prearranged, and as with all other shipments, will be provided only according to the terms and conditions contained in the UPS Rate and Service Guide.
- (v) UPS does not provide a protective service for the transportation of perishable commodities or commodities requiring protection from heat or cold. Such commodities will be accepted for transportation solely at the shipper's risk for any damage arising from the transportation.



# Terms and Conditions of Service

## Effective July 13, 2015

### (Continued)

(vi) No service shall be rendered in the transportation of any shipment which is prohibited by applicable law or regulations in the origin or destination country, or which UPS may determine, in its sole discretion, to be so prohibited.

The shipper shall be responsible for the accuracy and completeness of the particulars inserted in the Waybill and for ensuring that all shipments set out adequate contact details for the shipper and receiver of the shipment and that they are so packed, marked and labeled, their contents so described and classified and are accompanied by such documentation as may (in each case) be necessary to make them suitable for transportation and to comply with the requirements of the effective Rate and Service Guide and applicable law.

#### Large Package Surcharge

An additional charge applies for packages that are considered large. A package is considered a "Large Package" when its length plus girth [(2 X width) + (2 X height)] combined exceeds 330 centimeters (130 inches), but does not exceed the maximum UPS size of 419 centimeters (165 inches). Large Packages shipped are subject to a minimum billable weight of 40 kilograms (90 pounds).

An Additional Handling Charge will not be assessed when a Large Package Surcharge is applied.

#### Over Maximum Limits Charges

Packages that exceed the weight or size restrictions set forth in the Terms and Conditions of Service ("Items Not Accepted for Transportation") are subject to one or more of the following additional charges: Over Maximum Weight, Over Maximum Length, or Over Maximum Size. Such charges apply in addition to all other applicable charges, including but not limited to the Large Package Surcharge.

#### Additional Handling Charge

An Additional Handling charge will be assessed for any package that requires special handling, as determined by UPS in its sole discretion, including, but not limited to:

- (i) Any article that is encased in an outside shipping container made of metal or wood;
- (ii) Any cylindrical-like item, such as a barrel, drum, pail, or tire, that is not fully encased in a corrugated cardboard shipping container;
- (iii) Any package with the longest side exceeding 152 centimeters (or 60 inches) or its second-longest side exceeding 76 centimeters (or 30 inches);
- (iv) Any package with an actual weight greater than 32 kilograms (or 70 pounds); and

(v) Each package, excluding UPS Worldwide Express Freight™ shipments, where the average weight per package is greater than 32 kilograms (or 70 pounds) and the weight for each package is not specified in the UPS Shipping System used.

UPS reserves the right to assess the charge for any package that, in UPS's sole discretion, requires special handling.

#### Oversize Pallet Handling Surcharge

An Oversize Pallet Handling Surcharge will apply to UPS Worldwide Express Freight pallets that are classified as Oversize. A pallet is considered Oversize when its dimensions exceed thresholds, as set forth at [http://www.ups.com/media/en/oversize\\_pallet.pdf](http://www.ups.com/media/en/oversize_pallet.pdf).

UPS Worldwide Express Freight pallets are also subject to maximum size restrictions (which vary by origin and destination) as set forth at [www.ups.com/palletmaximums](http://www.ups.com/palletmaximums). Pallets that exceed these size restrictions are also subject to an Oversize Pallet Handling Surcharge.

#### UPS Paperless® Invoice Service

UPS Paperless Invoice Service provides shippers with the option of having electronic commercial invoices, which reflect their sale transactions of merchandise, prepared for them. This service would help shippers to expedite customs clearance of their international shipments and it is available to shippers who register with UPS in advance of shipping.

By using UPS Paperless Invoice service, the shipper authorises UPS to use the shipper's letterhead and electronic signature to prepare true, correct, and paperless commercial invoices that reflect, in all material respects, the shipper's sale transactions of merchandise to its buyers necessary to expedite in accordance with law the export and customs clearance of international shipments.

All commercial invoice information must be provided by the shipper, to ensure the accuracy and completeness of the Paperless Invoice. Timely upload of Package Level Details (PLD) by shippers is also required for use of this service. PLD includes, but is not limited to, the consignee's full name, complete delivery address and shipment dimensions and weight.

#### UPS Import Control®

UPS Import Control service allows a shipper to process an import shipment, including commercial invoice. Where available, a shipper may use UPS Import Control service to create a Print Import Label, Electronic Import Label, Print and Mail Import Label to provide to the sender of the shipment or a shipper may request UPS 1 Pickup Attempt or UPS 3 Pickup Attempts, to request that UPS make pickup attempts to retrieve import shipments from a sender's address. 3 UPS Pickup Attempts is not available for UPS Worldwide Express Freight. UPS Import Control is available only in countries where UPS pickup services are available. An additional charge for each UPS Import Control label as set forth in the UPS Rates in effect at the time the charge is applied.



# Terms and Conditions of Service

Effective July 13, 2015

## (Continued)

UPS Import Control is available for packages and pallets processed through UPS CampusShip®, UPS Internet Shipping, or UPS Developer Kit and also for packages only, processed through WorldShip® or an approved UPS Ready® solution.

Shipments containing certain items are prohibited from being shipped and are not accepted by UPS for UPS Import Control® service including, but not limited to Hazardous Materials shipments requiring shipping papers or firearms shipments requiring Delivery Confirmation Services. C.O.D. service is not available for UPS Import Control shipments.

The maximum actual or declared value for a UPS Import Control shipment is USD 50,000 per package and USD 100,000 per pallet; provided that for any UPS Import Control package or pallet with an actual or declared value in excess of USD 1000, the shipper must ensure that a UPS high value shipment summary is generated and signed by the UPS driver upon tender of the package or pallet to UPS. If no high value shipment summary is obtained and signed, the maximum actual or declared value of each such package or pallet is limited to USD 1000.

### Print Return Label; Electronic Return Label; Print and Mail Return Label

Shipments can be returned from an address using Print Return, Electronic Return, or Print and Mail Return Labels.

The maximum actual or declared value for each domestic Print Return Label, Electronic Return Label, or Print and Mail Return Label shipment is USD 1000 per package or pallet.

The maximum actual or declared value for each international Print Return Label, Electronic Return Label, or Print and Mail Return Label shipment is USD 50,000 per package or USD 100,000 per pallet; provided that for any such shipment with an actual or declared value in excess of USD 1000, the shipper must ensure that a UPS high value shipment summary is generated and signed by the UPS driver upon tender of the shipment to UPS. If no high value shipment summary is obtained and signed, the maximum actual or declared value for each such package or pallet is limited to USD 1000.

Upon delivery, a shipment returned will be charged the rate calculated from the pickup location to the destination via the service selected. An additional charge for each Print Return Label, Electronic Return Label, and Print and Mail Return Label shipment will be assessed when the service is requested. The applicable charges will be those set forth in the UPS Rates in effect at the time the charge is applied.

### UPS Returns® Plus

#### (i) 1 UPS Pickup Attempt

A shipper can request that UPS make one pickup attempt to retrieve a package or pallet from an address.

The maximum actual or declared value for each domestic 1 UPS Pickup Attempt service shipment is USD 1000 per shipment. The maximum actual or declared value for each international 1 UPS Pickup Attempt shipment is USD 50,000 per package or USD 100,000 per pallet; provided that for any international 1 UPS Pickup Attempt shipment with an actual or declared value in excess of USD 1000 per pallet or package, the shipper must ensure that a UPS high value shipment summary is generated and signed by the UPS driver upon tender of the shipment to UPS. If no high value shipment summary is obtained and signed, the maximum actual or declared value of each such shipment is limited to USD 1000 per shipment or pallet.

Upon delivery, a package returned using 1 UPS Pickup Attempt service will be charged the rate calculated from the pickup location to the destination via the service selected. An additional charge for each 1 UPS Pickup Attempt service package will be assessed when 1 UPS Pickup Attempt service is requested. The applicable charges will be those set forth in the UPS Rates in effect at the time the charge is applied.

#### (ii) 3 UPS Pickup Attempts

A shipper can request that UPS make three pickup attempts to retrieve a package from an address. This service is not available for UPS Worldwide Express Freight™.

The maximum actual or declared value for each domestic 3 UPS Pickup Attempts service shipment is USD 50,000. The maximum actual or declared value for each international 3 UPS Pickup Attempts service shipment is USD 50,000; provided that for any 3 UPS Pickup Attempts shipment with an actual or declared value in excess of USD 1000, the shipper must ensure that a UPS high value shipment summary is generated and signed by the UPS driver upon tender of the shipment to UPS. If no high value shipment summary is obtained and signed, the maximum actual or declared value for each such shipment is limited to USD 1000 per shipment or pallet.

### Deliveries Attempted Three Times Without Extra Charge

Where applicable, if UPS is unable to complete delivery of a shipment, a notice will be left at the consignee's address stating that delivery has been attempted. Thereafter, a second, and if necessary, a third attempt to deliver the packages will be made without additional charge. For UPS Worldwide Express Freight shipments, only one delivery attempt will be made; subsequent delivery attempts are subject to additional charges which will be charged to the consignee.



# Terms and Conditions of Service

## Effective July 13, 2015

### (Continued)

UPS may deliver a shipment to the consignee or the consignee's actual or apparent agent or representative or pursuant to consignee's instructions, to the address or location specified in the UPS shipping system, to any person present at the address or location specified in the UPS shipping system, to a reasonable alternate address or location, in accordance with trade custom or usage, pursuant to UPS's driver release procedures or delivery pursuant to UPS's Shipper Release procedures. UPS does not limit delivery of a shipment to a person specified as the consignee. UPS may use an electronic device to obtain proof of delivery and the shipper agrees that it will not object to UPS relying on a printed copy of this as evidence merely on the grounds that the information concerned is obtained and stored in electronic form.

#### Special Handling of Undeliverable Shipments; Refused Shipment Returned

Shipments refused by the consignee, or which for any other reason cannot be delivered, will be held, and UPS will attempt to contact the shipper for further instructions, including return. If the return of the shipment is refused by the shipper, or the shipment cannot otherwise be returned to the shipper, UPS will retain the shipment for a reasonable period of time, to be determined at its sole discretion (not to exceed thirty days), and upon exercising reasonable commercial efforts at notifying the shipper, UPS reserves the right to deal with the shipment thereafter in any manner at its sole discretion, including but not limited to disposal of the package. The shipper will be responsible for payment of all charges, including, but not limited to, forwarding, disposal, or return transportation charges, as well as any duty and tax, if applicable. UPS will not be liable for any claims for loss or damage to a shipment refused by the shipper on return.

#### Refusal and Suspension of Service

If it comes to the attention of UPS that any shipment does not meet any of the above restrictions or conditions, UPS may refuse to transport the relevant shipment, if carriage is in progress, UPS may suspend carriage and hold the shipment.

UPS also reserves the right to refuse to provide service, among other reasons, for any shipment which by reason of the character of its contents may, in the sole judgment of UPS, soil, taint, or otherwise damage other shipments or UPS's equipment, or which is improperly or insecurely packed or wrapped. In addition, UPS reserves the right either to refuse to provide service for any shipment to or from any location, or to provide alternative service arrangements, when, among other reasons, UPS, in its sole discretion, deems that it is unsafe or economically or operationally impracticable to provide service.

UPS may at its option suspend transportation of any shipment if goods are found not to be acceptable for transportation for any reason whatsoever, if UPS cannot effect delivery at the third attempt to do so, if the consignee refuses to accept delivery, or if it cannot collect amounts due from the receiver on delivery. The shipper will be responsible for payment of all charges, calculated in accordance with the then current UPS rates, caused by such suspension of transportation, including, but not limited to, forwarding, disposal, or return of transportation charges as well as any duty or tax, if applicable.

The shipper will be responsible for the reasonable costs and expenses of UPS (including storage), for such losses, taxes and customs duties as UPS may suffer and for all claims made against UPS because a shipment does not meet any of the restrictions or conditions in the Commodities Handled and Restrictions on Service clause above or because of any refusal or suspension of carriage or return of a shipment by UPS pursuant to these terms.

UPS will not be liable or responsible for the loss of or damage to any shipment, the contents of which UPS is not authorized to accept, which UPS states it will not accept, or which UPS has a right to refuse. If UPS suspends service as set forth in these terms, the payer of any transportation charges shall not be entitled to a refund. Acceptance for carriage of any shipment that UPS does not accept for transportation or which shippers are prohibited from shipping, does not constitute a waiver of any provisions of these terms or the terms set forth in the Rate and Service Guide, or on [ups.com](http://ups.com)<sup>®</sup>.

#### Hold for Pickup and Hold at Location Services

At the time a shipper tenders a shipment to UPS, the shipper may request that UPS hold a domestic package at a designated UPS Customer Center for pickup by the consignee. For each such shipment, the shipper will complete an address label showing the words "Hold for Pickup," the consignee's name, telephone number, the name of a contact person, and the full address of the designated UPS Customer Center. In addition, the shipper will apply a UPS Hold for Pickup label below the address label on the shipment. Hold for Pickup is not available for international package shipments.

For UPS Worldwide Express Freight<sup>™</sup> shipments, the shipper may request that UPS hold a UPS Worldwide Express Freight shipment at a UPS Worldwide Express Freight Center location for pickup by the consignee. For each such shipment, the shipper will complete an address label showing the words "Hold for Pickup," the consignee's name, telephone number, the name of a contact person, and the full address of the consignee (designated UPS Worldwide Express Freight Center address not required).

UPS will hold the shipment at the designated UPS Customer Center or UPS Worldwide Express Freight Center and will attempt to contact the consignee at the telephone number shown on the label. Shipments not picked up within five (5) business days from the date of arrival will be considered undeliverable.

"UPS Worldwide Express Freight Center" means a UPS facility where a shipper may tender UPS Worldwide Express Freight pallets to UPS for transportation, and a consignee or other recipient may receive a pallet for delivery. UPS Worldwide Express Freight Centers available in Asia-Pacific are listed at [ups.com](http://ups.com)<sup>®</sup> under Global Locator section.

#### Packaging

It is the responsibility of the shipper to ensure that proper packaging is used and that contents are adequately and securely packed, wrapped and cushioned for transportation. The use of UPS-provided packaging (including but not limited to materials, supplies and assistance) is *not* a guarantee that an item is sufficiently packaged for transportation.



# Terms and Conditions of Service

## Effective July 13, 2015

### (Continued)

When shipping certain electronic media containing sensitive personal information, it is recommended that the shipper retain a copy of the data and secure the data on the electronic media through encryption or other technological means. UPS is not liable or responsible for loss of, damage to, or irretrievability of data stored on electronic media, or loss of information.

UPS Worldwide Express Freight™ shipments must be palletized, stackable, able to be lifted by forklift, and shrink-wrapped or banded to a skid. Shipper must ensure that pallets and packaging comply with all applicable laws and regulations of the origin and destination country.

#### Right of Inspection

UPS reserves the right, but is not required, to open and inspect any shipment tendered to it for transportation.

In addition, UPS is a regulated cargo agent and is subjected to security screening and clearing procedures by the local airport police and relevant authorities in accordance with local law, and that civil and criminal penalties, including forfeiture and sale, may be imposed for making false, fraudulent statements, or consigning explosives or explosive devices without lawful authority.

#### Provisions for Customs Clearance of International Shipments

The shipper must provide required documentation for customs clearance. By providing required documentation, the shipper certifies that all statements and information relating to exportation and importation are true and correct. Furthermore, the shipper understands that UPS is a regulated cargo agent and is subjected to security screening and clearing procedures by the local airport police and relevant authorities in accordance with local law, and that civil and criminal penalties, including forfeiture and sale, may be imposed for making false or fraudulent statements or consigning explosives or explosive devices without lawful authority. When a shipment is tendered to UPS, UPS is thereby appointed as the agent for performance of customs clearance, where applicable. UPS is specified as the nominal consignee for the purpose of designating a customs broker to perform customs clearance.

Customs penalties, storage charges, or other expenses incurred as a result of an action by customs or failure by the shipper or consignee to provide proper documentation or to obtain a required license or permit will be charged to the consignee along with any applicable duty or tax. The shipper shall be liable in the event of non-payment by the consignee. Where applicable, UPS provides brokerage service at no additional charge for routine customs clearance. Additional charges may be applied for the complex clearance procedures listed in the Rate Guide.

#### Rates

The effective rates are the UPS Rates published in the effective UPS Rate and Service Guide for the service selected by the shipper, which apply to the shipper and the shipment and are in effect at the time of shipping, plus any additional charges or rates for nonstandard service, additional or nonstandard usage, and any other additional charges referenced in the effective UPS Rate and Service Guide, or those applicable additional rates set out in any customized contracts. To determine the amount of any charge for UPS service, consult the effective UPS Rates, available at ups.com® and upon request at the local UPS office. UPS Worldwide Express Freight pallets that are processed as door-to-door pallets prior to drop off at a UPS Worldwide Express Freight Center will receive door-to-door rates.

#### Payment

Unless paid before shipment, all charges must be paid within 7 days of receipt of invoice or within such other period as the shipper may have agreed in writing with UPS. Unless proved otherwise, an invoice shall be considered for this purpose to have been received three business days following the date of invoice.

Any payments made by UPS, including but not limited to taxes, duties or other levies, on behalf of the shipper, receiver or some other party, shall be due and payable by the shipper on demand. Notwithstanding any billing or payment option selected at the time of shipment, the shipper is ultimately liable for and agrees to pay all charges, including where the receiver or third party fails to pay any charges which they are due to pay. A late payment fee in the amount set out in UPS's invoice may be charged on any sums outstanding as of the specified payment due date. This is in addition to any legal rights and remedies available to UPS.

#### Missing/Invalid Account Number or Refusal Fee

A processing fee, set forth in the UPS Rates applicable to the shipment in effect at the time of shipping, will be charged for a missing or invalid account number when the account number is missing or it is not the correct account number for the bill-to party, or if it is the account number for a receiver or third party who fails to pay the shipping charges. In the event of non-payment by the receiver or third party, the shipper will be billed a refusal fee plus the shipping charges.

#### Interruption of Service

If UPS is unable to start or continue with carriage of the shipper's shipment for a reason beyond its control, the shipper will not be able to claim that UPS is in breach of its agreement with the shipper but UPS will take all steps that are reasonably practicable in the circumstances to commence or continue the carriage.



# Terms and Conditions of Service

## Effective July 13, 2015

### (Continued)

UPS shall not be liable for, and the UPS Service Guarantee shall not apply to, any interruption of service due to causes beyond UPS's control, including, but not limited to, the following: the unavailability or refusal of a person to accept delivery of the shipment; acts of God; acts of public authorities acting with actual or apparent authority; acts or omissions of customs or similar authorities; insufficient information provided by a customer; the application of security regulations imposed by the government or otherwise applicable to the delivery location; a government agency hold; riots; strikes or other labor disputes; civil unrest; disruptions or failure of communication and information systems (including, but not limited to UPS's communication and information systems); disruptions of any kind in air or ground transportation networks; such as weather phenomena; and natural disasters.

#### UPS Service Guarantee

UPS's on-schedule delivery of shipments for certain services and destinations is supported by a money-back guarantee, as set forth in the Rate and Service Guide, Details of UPS's Service Guarantee, including its applicability and limitations, and the corresponding delivery and latest pick up time for the relevant service and destination are as set out on the UPS website (ups.com®) current at the time the goods are accepted for carriage and can also be confirmed by contacting the local UPS office. Where the Service Guarantee operates, and the conditions for the Service Guarantee as set forth in the Rate and Service Guide are fulfilled, if UPS fails to attempt delivery within the applicable time period, UPS will on request, at its option, either refund or credit the shipper (or any other person who paid for the carriage) with the shipping charges (or, in the case that only some of the packages or pallets in a multiple package or pallet shipment fail to meet the applicable time limit, the proportionate part of the shipping charges relating to those packages or pallets), net of any surcharges, Value Added Tax, duties or any taxes and levies. UPS must also be notified in writing or by telephone within 15 calendar days after the scheduled delivery for all Guaranteed Service Refund claims.

The Service Guarantee does not apply where late delivery results from non-compliance with the restrictions or conditions in the Commodities Handled and Restrictions on Service clause, from the exercise of any lien by UPS in accordance with these terms, where either the Refusal and Suspension of Service clause or the Interruption of Service clause apply. The UPS Service Guarantee does not apply to (i) packages or pallet subject to a Large Package Surcharge, Oversize Pallet Handling Surcharge or Additional Handling Charge; (ii) shipments containing any package that exceed maximum size or weight limits, or (iii) shipments containing any package or pallet subject to a Large Package Surcharge, Oversize Pallet Handling Surcharge, Additional Handling Charge, or that exceed maximum size or weight limits. For UPS Worldwide Express Freight™ shipments, the Service Guarantee shall apply to a shipment in excess of 2 tons or 4,400 pounds only if the shipper obtained confirmation of eligibility for the Service Guarantee, prior to tender of the shipment to UPS for service.

For the avoidance of doubt, UPS's liability under the Service Guarantee is limited to the above and the Service Guarantee does not otherwise constitute any form of undertaking or representation that the shipment will arrive by any particular time.

UPS may also cancel or suspend the UPS Service Guarantee for any service(s), and for any period of time, as determined by UPS in its sole discretion, and without prior notice.

#### Billing Options

The amount billed includes, but is not limited to, shipping charges, duties and taxes, if applicable. Unless otherwise restricted in the origin or destination country, UPS provides the following selection of payer options:

##### Bill Shipping Charges to:

- (a) Shipper – The shipper pays all shipping charges.
- (b) Receiver – The receiver pays all shipping charges.
- (c) Third Party – The designated third party pays all shipping charges. This option is subject to the third party having a UPS account. Shipper must indicate the third party's name, account number, and country in the appropriate section of the UPS Waybill.

##### Bill Duties and Taxes to:

- (a) Shipper – The shipper pays all duties and taxes.
- (b) Receiver – The receiver pays all duties and taxes.
- (c) Third Party – The designated third party pays all duties and taxes. This option is subject to the third party having a UPS account. Shipper must indicate the third party's name, account number, and country in the appropriate section of the UPS Waybill.

Shipper guarantees payment of all charges payable to UPS by the receiver or third party designated on the waybill. For all shipments where the shipper is not paying the shipping charges, the shipper must notify the bill payer prior to shipping, and that option must be indicated on the UPS Waybill in the space provided. UPS reserves the right in its sole discretion to request advance payment of shipping charges for any package or pallet sent to or from any international destination or origin.

An additional Duty and Tax Forwarding Surcharge will apply if the shipper selects a billing option in which duties and taxes are to be paid outside of the destination country.



# Terms and Conditions of Service

## Effective July 13, 2015

### (Continued)

#### Responsibility For Loss or Damage

Where the Warsaw or CMR Conventions or any national laws implementing or adopting these conventions apply (for convenience referred to as Convention Rules) or where (and to the extent that) other mandatory national law applies, the liability of UPS is governed by and will be limited according to the applicable rules.

Where Convention Rules or other mandatory national laws do not apply, UPS will only be liable for failure to act with reasonable care and skill and its liability shall be exclusively governed by these terms and (save in the case of personal injury or death) limited to proven damages up to an amount not exceeding USD 100 per shipment, or per pallet in a UPS Worldwide Express Freight™ shipment, unless a higher value has been declared by the shipper as hereafter provided. If the claimant (or any person from whom he derives his right to claim) has caused or contributed to any loss, damage or delay to a shipment, any liability UPS may incur in respect thereof (limited as above) may be reduced or extinguished in accordance with the law applicable to such contributory negligence.

Subject to the provisions of the paragraph stated below, the shipper may obtain for a shipment the benefit of a greater limit of liability than UPS provides under (ii) of the Commodities Handled and Restrictions on Service clause above or than is provided by Convention Rules or other mandatory national law. The shipper may do so by declaring a higher value for carriage on the Waybill and paying an additional charge as stated in the Rate and Service Guide. If the shipper declares a higher value for carriage and pays the applicable charge, then UPS's liability shall be limited to a maximum of the declared value for carriage. The value of the goods concerned shall not in any event exceed the limits specified in the Commodities Handled and Restrictions on Service clause. UPS does not offer shippers' cargo insurance. Shippers desiring cargo insurance or all risk insurance should purchase such insurance from third parties.

Save where applicable Convention Rules or other applicable mandatory national laws require otherwise, UPS shall not be liable for special, incidental, or consequential damages, including purely economic losses, such as the costs of any alternative means of transport, loss of profits, loss of business opportunities or loss of revenue resulting from loss of use, arising from any loss of or damage or delay to a shipment, whether or not a value has been declared as set forth above.

UPS shall not be liable for any damages arising from UPS's inability, failure or refusal to comply with a request to stop, return or re-route shipment of a package or pallet after tender to UPS.

#### Claims Procedure

All claims against UPS must be filed in writing with UPS as soon as reasonably practicable and in any event within 14 days of delivery in the case of damage (including partial loss of a shipment) and in the case of delay within 21 days of delivery. In addition, UPS shall have no liability in connection with any shipment unless legal proceedings are brought and written notice of them is given to it within six months after delivery of the goods concerned or, in the case of non-delivery, within six months from the scheduled date for delivery. This term shall not affect any rights the shipper may have under applicable Convention Rules or other applicable mandatory national laws.

#### Data Protection

The shipper agrees that UPS and other companies in the UPS group of companies worldwide, including companies in countries which may not have the same level of data protection as the country where the shipment is presented to UPS for carriage, may use any data provided by the shipper to UPS for the purposes set forth in, and subject to, the UPS Privacy Notice published on UPS's web site at <http://www.ups.com/content/in/en/resources/ship/terms/privacy.html> (hereby incorporated by reference into these terms). The shipper has certain rights under the law to have access to, rectify, object to the use for direct marketing of, or delete personal data held by UPS about it.

#### Entire Agreement

All shipments are subject to the terms and conditions contained in the UPS Rate and Service Guide and set out on the UPS website ([ups.com](http://ups.com)®). The effective UPS Rate and Service Guide and the description of UPS Services at [ups.com](http://ups.com)®, which are incorporated in the UPS Rate and Service Guide; and the UPS source document for each shipment, together comprise the complete and exclusive agreement of the parties, except as modified by any existing or future written agreement between the parties, and may not be contradicted or modified by any oral agreement.

#### Severability

These terms shall apply to the fullest extent permitted by applicable law. If any part of these terms is not enforceable, this will not affect the enforceability of any other part.

#### Governing Law

These terms and any contract concluded which incorporates these terms shall in all respects be governed by the laws of the country where the shipment is presented to UPS for carriage.



ups.com®  
Nationwide Toll Free:  
1800-22-7171/1800-102-7171

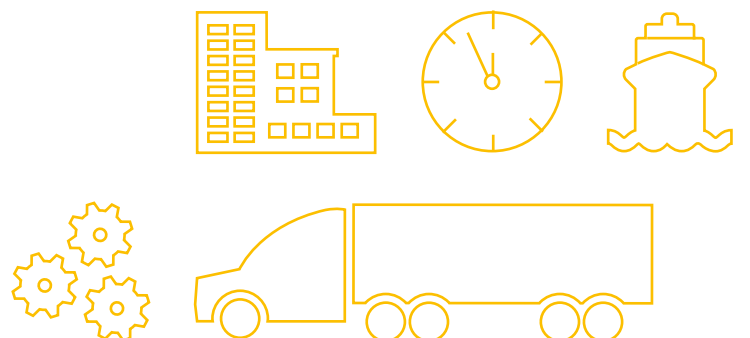
**UPS Jetair Express Pvt. Ltd.**

Plot No. 6-A,  
Shyam Nagar, Off JVL  
Majas Village, Jogeshwari (E)  
Mumbai 400060  
India  
Tel No: 91-22-2827-6200

**Customer Service Hotline**

Tel: 1800-22-7171 /  
1800-102-7171  
Monday - Saturday: 08:30 - 21:00  
Closed on Sundays and  
Public Holidays

[www.ups.com](http://www.ups.com)





ups.com<sup>®</sup>

Nationwide Toll Free:

1800-22-7171/1800-102-7171

---

