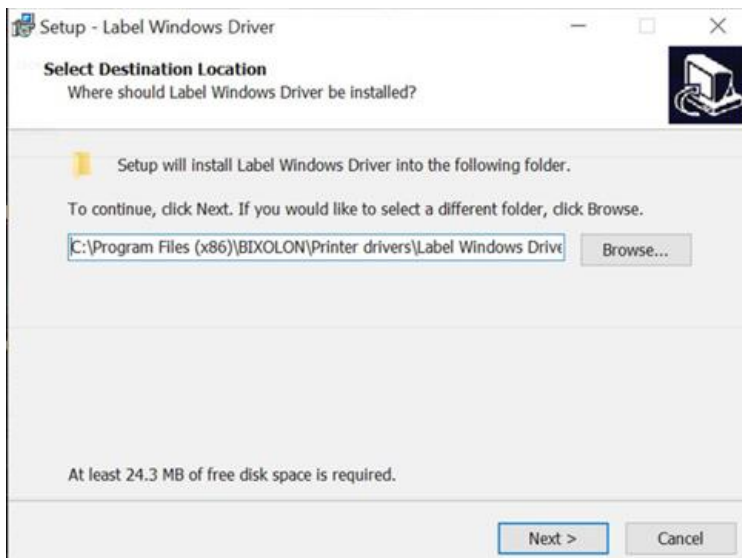




- Before installing the printer driver, make sure the printer is turned off and disconnected from the computer. NOTE: Administrator privileges are always required when downloading and installing new software.
- The Bixolon printer uses the 8.5x11 label size by default. Select the Generic Thermal Printer option to select the correct labels.

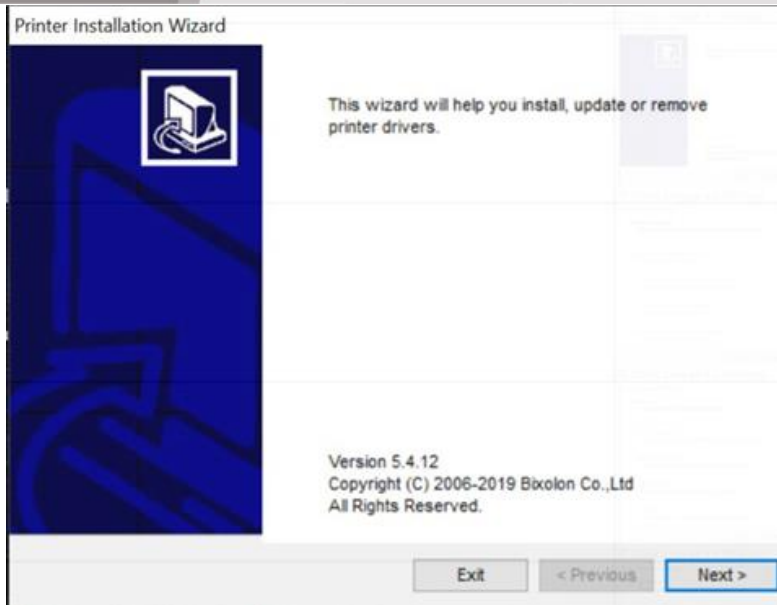
Follow these steps prior to installing your Bixolon Printer to ensure success:

1. To obtain the driver installer, download the correct driver for your device using the following link: <https://www.ups.com/us/en/support/shipping-support/print-shipping-labels/thermal-printing-of-labels.page>
 - a. NOTE: click the Download button for the desired driver on the page referenced here. This button should take you to the Bixolon website where you can download the desired printer driver.
2. Begin by double clicking downloaded zip file.
3. Agree to the Bixolon terms and conditions by checking the box marked 'Accept'
4. Click Download.
5. Select the appropriate install location using the Browse option located in the center of the screen. Then, click next.

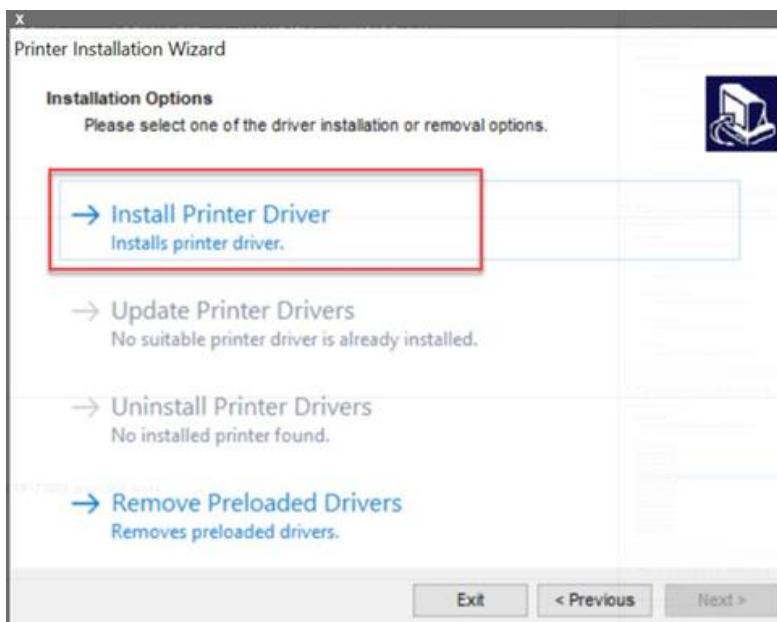


6. The application will now install the drivers to the selected file location. Let the installer complete.
7. A printer installation wizard will now open. Click Next.

© 2022 United Parcel Service of America, Inc. UPS, the UPS brandmark and the color brown are trademarks of United Parcel Service of America, Inc. All rights reserved.

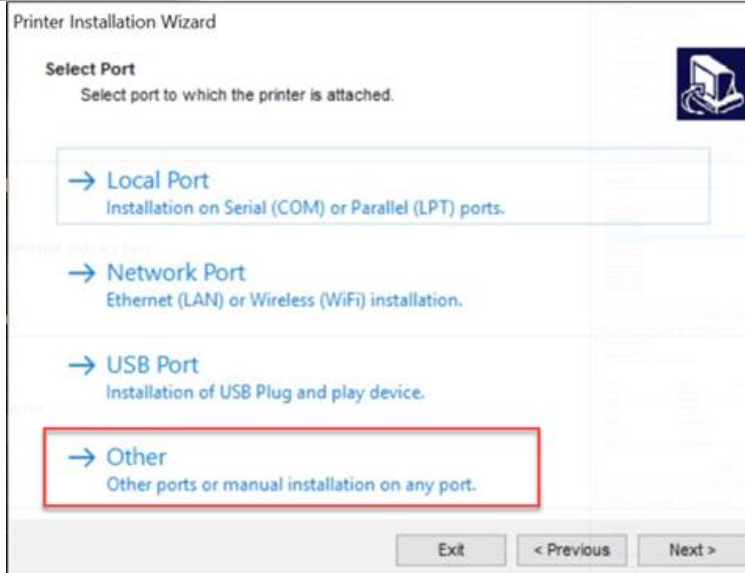


8. Select the "Install Printer Driver" option from the next menu.

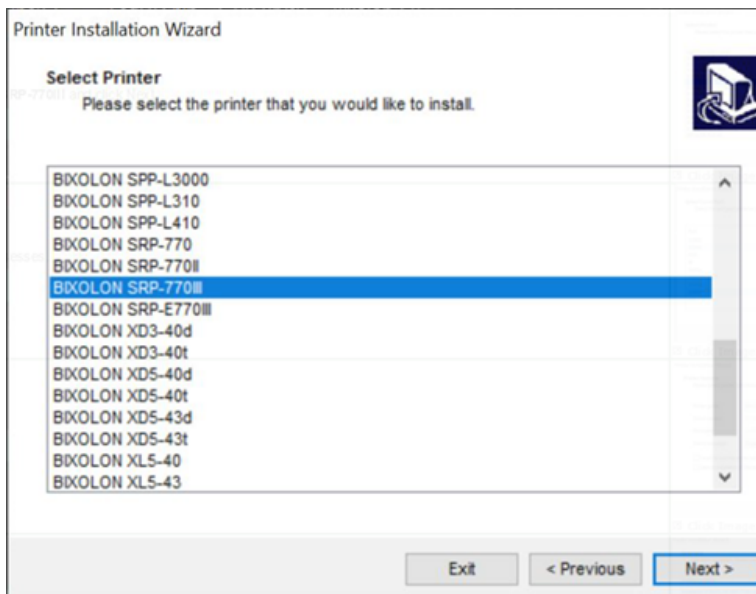


9. The wizard will ask you to select a port. Select the "Other" option at the bottom. Click Next.

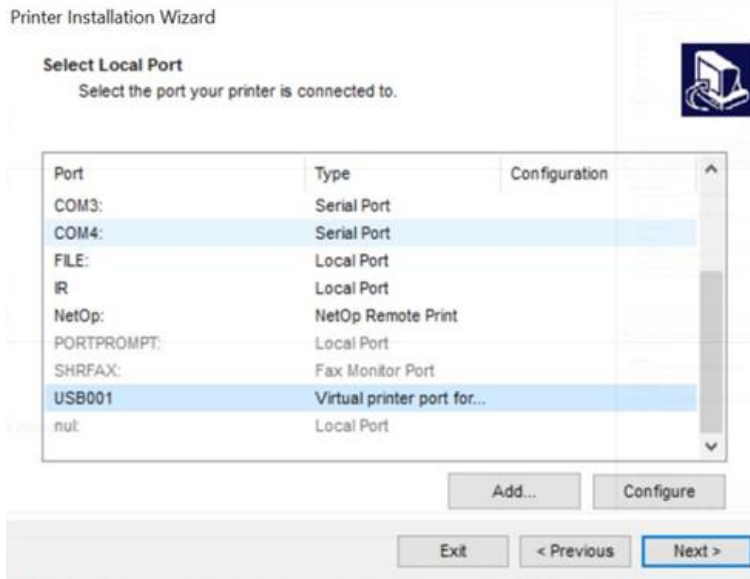
(There is a USB option, but that option is not always successful)



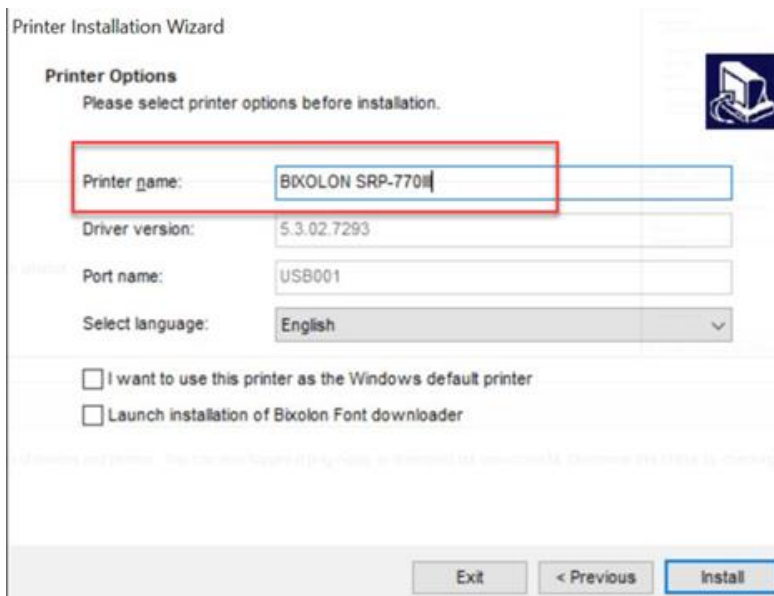
10. Scroll through the Bixolon models that are available:
11. Select the option for BIXOLON SRP-770III. Click Next.



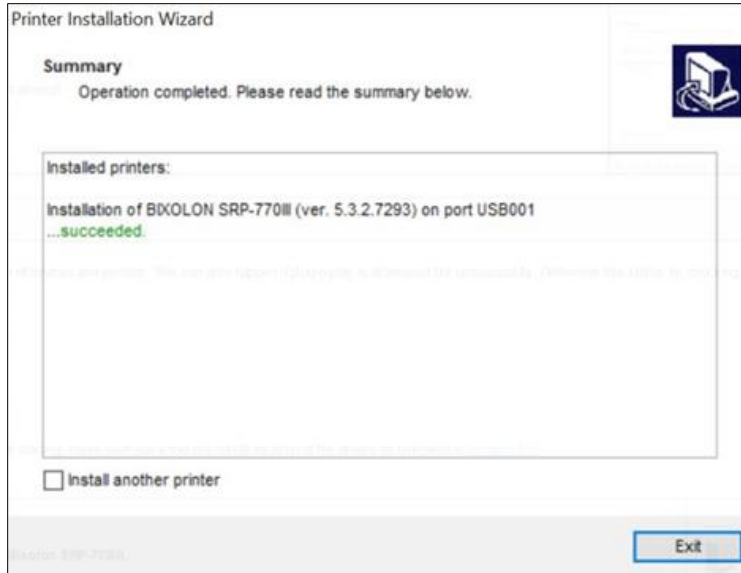
12. Select the port from this screen. The port will be indicated by the cable the customer possesses.
13. Typically, this option will be USB001. Click Next.



14. This screen will allow the user to indicate the printers' name. Click Install.



15. Once the installer is complete, navigate to the control panel to open the Devices and Printers window. Locate the BIXOLON SRP-770III in this window.



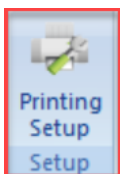
16. Once the entry is visible in the window, plug the printer in to the computer, and turn it on.
17. If technical assistance is needed, please contact the UPS Help Desk at [?](#)

WorldShip is not configured to recognize the Bixelon printer by default:

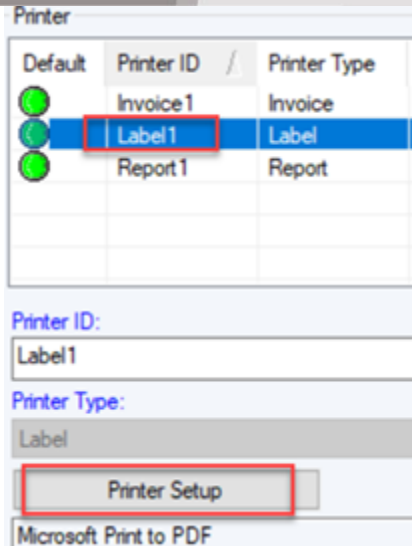
1. In WorldShip select the Printing activities tab.



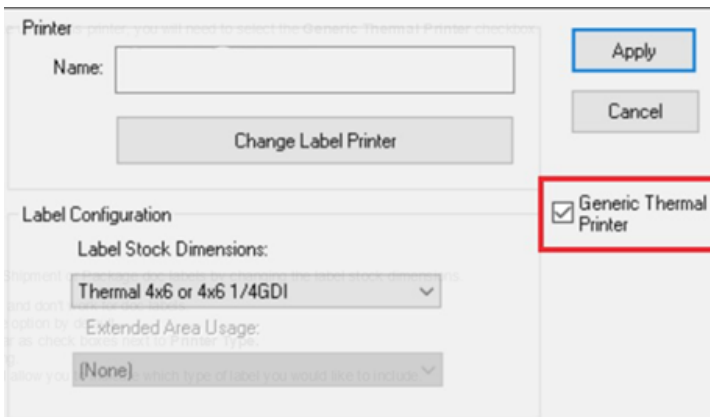
2. Click Printing Setup.



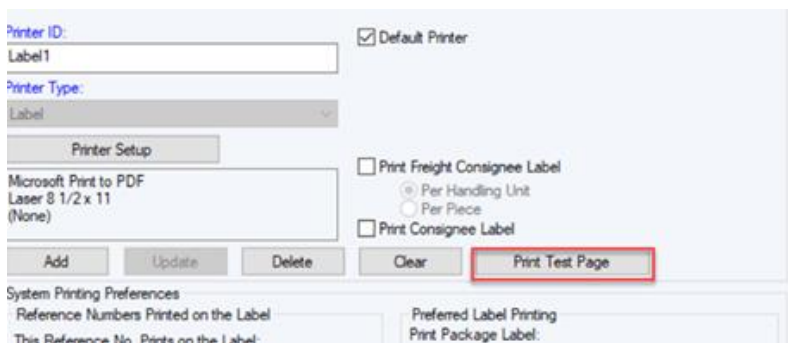
3. Select the label printer.
4. Click Printer Setup.



5. Check the Generic Thermal Printer checkbox, click apply.



6. Print a test page.



Shipment and package Doc Label set up:

- Once the generic thermal printer has been indicated for this device, the customer can make use of Shipment or Package doc labels by changing the label stock dimensions.

© 2022 United Parcel Service of America, Inc. UPS, the UPS trademark and the color brown are trademarks of United Parcel Service America, Inc. All rights reserved.



- The default dimensions, Thermal 4x6 or 4x6 1/4GDI do not support extended area printing, and don't work for doc labels.
- The option Thermal 4x8 or 4x8 1/4GDI (Perforated) supports doc labels and will select the option by default.
- Once this stock size has been selected, click Apply. The doc label options will appear as check boxes next to Printer Type.
- The third option, Thermal 4x8 or 4x8 1/4GDI supports the full range of extended area printing.
- The dropdown below the Label Stock Dimensions field will become available and will allow you to indicate which type of label you would like to include.
- Prior to utilizing doc labels in WorldShip, the Bixelon driver must be configured to utilize the 4.00" x 8.25" label size.

To enable this stock size, open the control panel and follow these instructions:

1. From within the control panel, open the 'devices and printers' submenu.
2. Right click on the BIXOLON SRP-770III (or BIXOLON SRP-e770III).
3. Select Printing Preferences.
4. In the Options tab, locate the paper size section.
5. Edit the width to 4.00 and the height to 8.25.
6. Click OK to exit this screen.
 - a. Once the printer has completed a self-test, attempt to print a test page from windows.

Please contact the UPS Help Desk with any questions on installing your Bixelon printer after using this guide.